

WAAS CH <b>45908</b> <b>W30A</b>	APP CRS <b>300°</b>	Rwy Idg TDZE Apt Elev	<b>5000</b> <b>1266</b> <b>1274</b>
----------------------------------------	------------------------	-----------------------------	-------------------------------------------

# RNAV (GPS) RWY 30

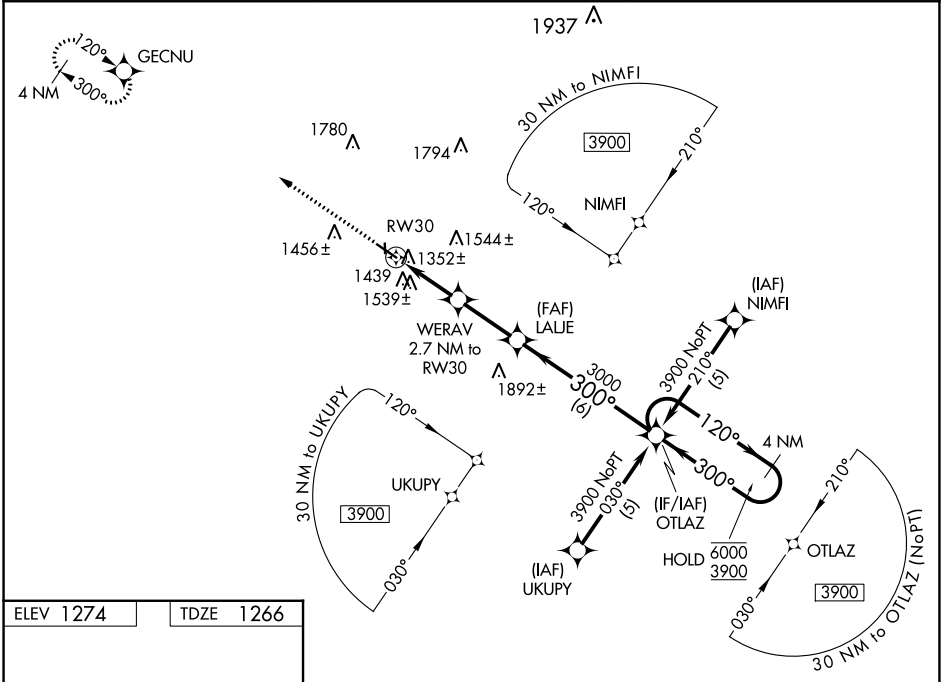
DENISON MUNI (DNS)

RNP APCH-GPS.

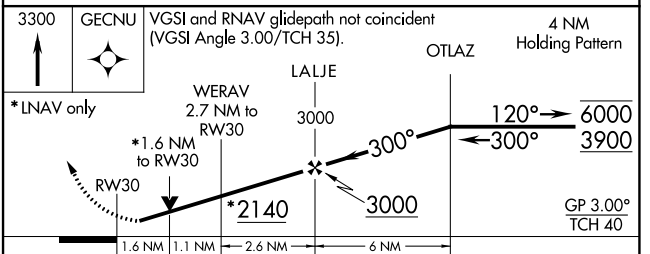
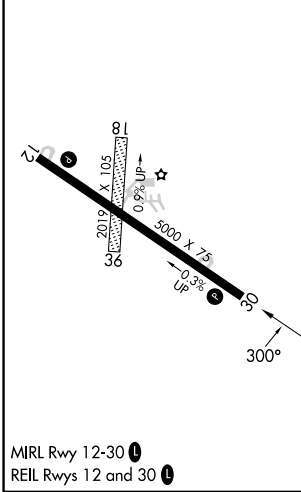
⚠ Circling NA to Rwy 18 and 36. Rwy 30 helicopter visibility reduction below 3/4 SM NA. Baro-VNAV and VDP NA when using Carroll altimeter setting. When local altimeter setting not received, use Carroll altimeter setting; increase LPV DA to 1623 feet, increase LNAV/VNAV DA to 1925 feet and all visibilities 1/8 SM, increase all MDA 80 feet; increase LNAV and Circling visibility Cat C 1/4 SM. For uncompensated Baro-VNAV systems, LNAV/VNAV NA below -17°C or above 54°C.

MISSED APPROACH: Climb to 3300 direct GECNU and hold.

AWOS-3 <b>119.95</b>	MINNEAPOLIS CENTER <b>119.6 290.4</b>	UNICOM <b>122.8 (CTAF)</b>
-------------------------	------------------------------------------	-------------------------------



ELEV 1274	TDZE 1266
-----------	-----------



CATEGORY	A	B	C	D
LPV DA	1551-1	285 (300-1)		NA
LNAV/VNAV DA	1853-1 3/4 587 (600-1 3/4)			NA
LNAV MDA	1800-1	534 (600-1)	1800-1 1/2 534 (600-1 1/2)	NA
CIRCLING	1840-1 566 (600-1)	1880-1 606 (700-1)	2100-2 1/2 826 (900-2 1/2)	NA

NC-3, 13 JUN 2024 to 11 JUL 2024

NC-3, 13 JUN 2024 to 11 JUL 2024