

WAAS CH <b>40234</b> <b>W17A</b>	APP CRS <b>175°</b>	Rwy Idg TDZE Apt Elev	<b>3704</b> <b>27</b> <b>28</b>
--	------------------------	-----------------------------	---------------------------------------

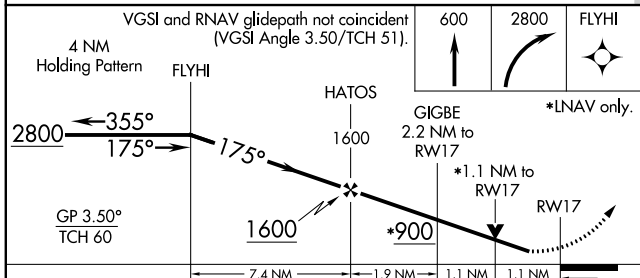
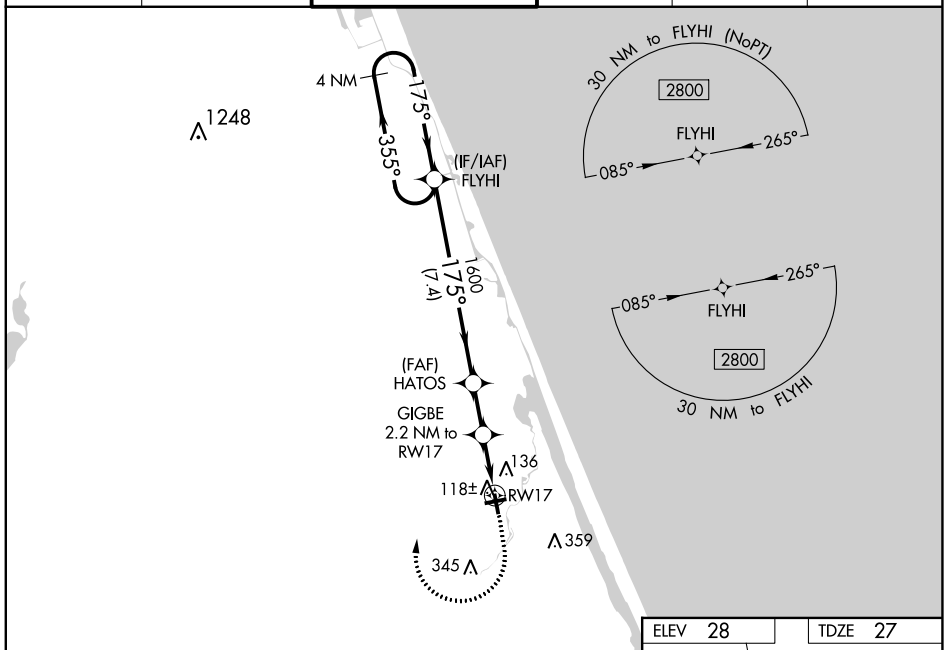
# RNAV (GPS) RWY 17

ORMOND BEACH MUNI (OMN)

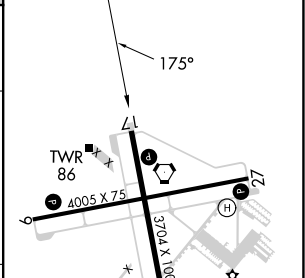
**⚠** Baro-VNAV NA when using Daytona Beach altimeter setting. For uncompensated Baro-VNAV systems, LNAV/VNAV NA below -1.5°C (5°F) or above 54°C (130°F). DME/DME RNP-0.3 NA. Helicopter visibility reduction below 3/4 SM NA. When local altimeter setting not received, use Daytona Beach altimeter setting and increase all DA 19 feet and all MDA 20 feet; increase VNAV Cat C visibility 1/8 mile. VDP NA when using Daytona Beach altimeter setting.

**MISSED APPROACH:** Climb to 600 then climbing right turn to 2800 direct FLYHI and hold.

ATIS <b>118.475</b>	DAYTONA APP CON <b>125.8 269.075</b>	ORMOND BEACH TOWER* <b>119.075 (CTAF)</b> <b>📻</b>	GND CON <b>121.625</b>	CLNC DEL <b>121.625</b>	UNICOM <b>123.05</b>
------------------------	---	---	---------------------------	----------------------------	-------------------------



ELEV 28	TDZE 27
---------	---------



CATEGORY	A	B	C	D
LPV DA	302-1	275 (300-1)		NA
LNAV/VNAV DA	288-1	261 (300-1)		NA
LNAV MDA	400-1	373 (400-1)		NA
<b>C</b> CIRCLING	500-1	471 (500-1)	740-2 711 (800-2)	NA

REIL Rwy 9, 17, 27, and 35 **📻**  
MRL Rwy 9-27 and 17-35 **📻**

SE-3, 13 JUN 2024 to 11 JUL 2024

SE-3, 13 JUN 2024 to 11 JUL 2024