

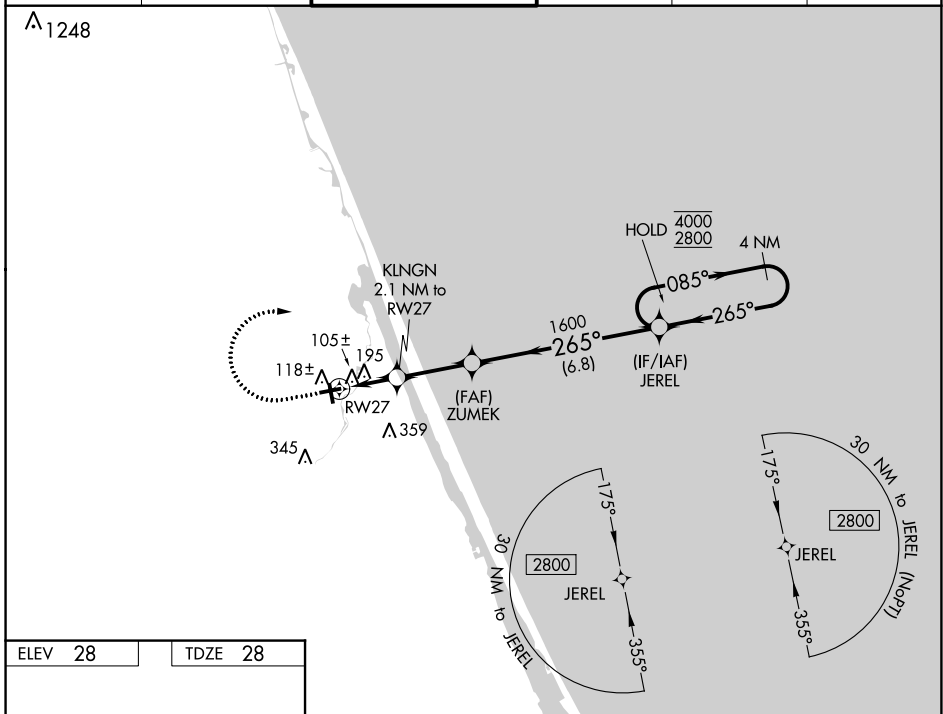
WAAS CH <b>77634</b> <b>W27A</b>	APP CRS <b>265°</b>	Rwy Idg TDZE Apt Elev	<b>4005</b> <b>28</b> <b>28</b>
--	------------------------	-----------------------------	---------------------------------------

# RNAV (GPS) RWY 27

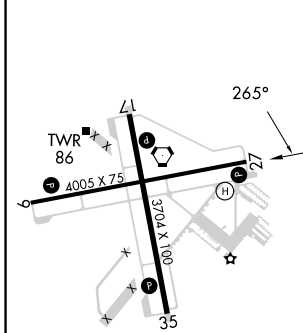
ORMOND BEACH MUNI (OMN)

RNP APCH.		MISSED APPROACH: Climb to 600 then climbing right turn to 2800 direct JEREL and hold.			
Rwy 27 helicopter visibility reduction below 3/4 SM NA.					

ATIS <b>118.475</b>	DAYTONA APP CON <b>125.8 269.075</b>	ORMOND BEACH TOWER* <b>119.075 (CTAF)</b>	GND CON <b>121.625</b>	CLNC DEL <b>121.625</b>	UNICOM <b>123.05</b>
------------------------	---	--	---------------------------	----------------------------	-------------------------



ELEV 28	TDZE 28
---------	---------



REIL Rwy 9, 17, 27, and 35   
MIRL Rwy 9-27 and 17-35

600		2800		JEREL		Visual Segment - Obstacles.		4 NM Holding Pattern	
RWY 27		0.8 NM to RWY 27		ZUMEK		1600		JEREL	
0.8		1.3 NM		2.7 NM		6.8 NM			
CATEGORY	A		B		C		D		
LP MDA	360-1		332 (400-1)						NA
LNAV MDA	460-1		432 (500-1)		460-1 1/4 432 (500-1 1/4)				NA
CIRCLING	500-1		472 (500-1)		740-2 712 (800-2)				NA

SE-3, 13 JUN 2024 to 11 JUL 2024

SE-3, 13 JUN 2024 to 11 JUL 2024