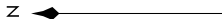
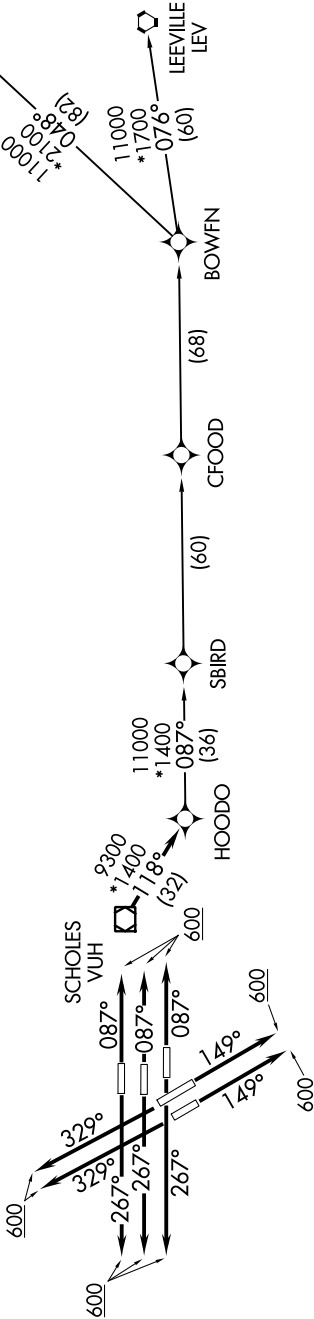


TOP ALTITUDE:  
16000



- NOTE: RNAV 1.
- NOTE: RADAR required.
- NOTE: ATC assigned only.
- NOTE: DME/DME/IRU or GPS required.
- NOTE: For non-GPS equipped aircraft, LCH, LLA, TBD, and LEV DME's must be operational.

D-ATIS  
124.05  
CINC DEL  
128.1  
CPDLC  
GND.CON  
118.575 (Rwys 8L/R, 9, 26L/R, 27)  
121.7 (Rwys 15L/R, 33L/R)  
HOUSTON TOWER  
120.725 290.2 (Rwys 8L, 26R)  
125.35 290.2 (Rwys 8R, 26L)  
127.3 288.25 (Rwys 15L/R, 33L/R)  
135.15 290.2 (Rwys 9, 27)  
HOUSTON DEP CON  
127.125 269.075



TAKEOFF MINIMUMS  
Rwys 8L/R, 9, 15L/R, 26L/R, 27, 33L/R:  
Standard with minimum climb of 500' per NM to 600.

NOTE: Chart not to scale.

(NARRATIVE ON FOLLOWING PAGE)