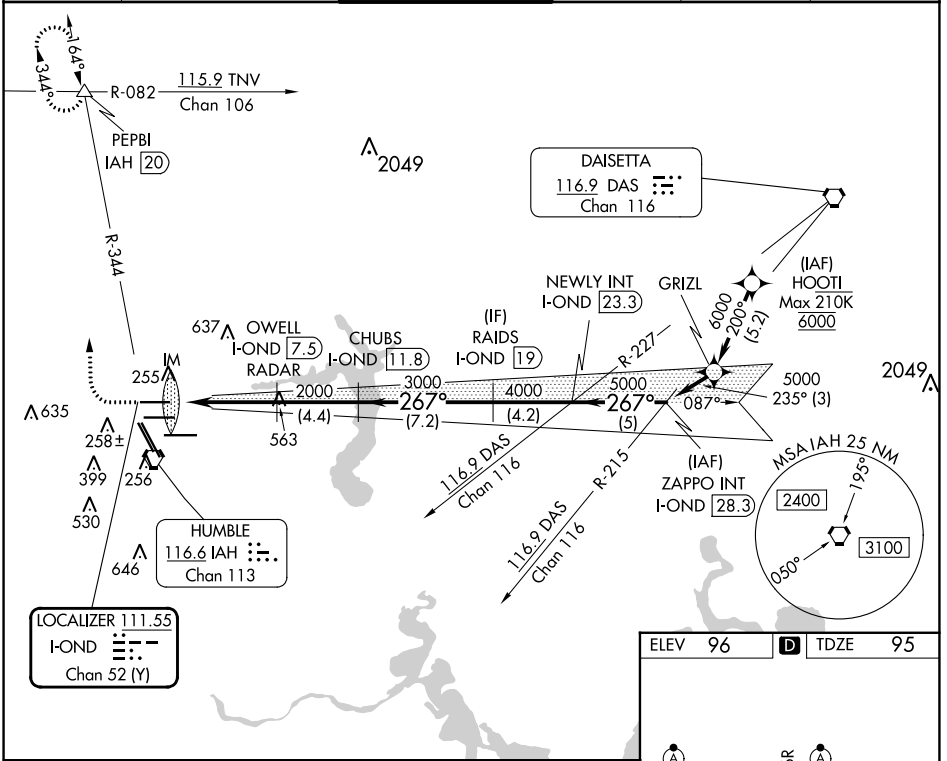


LOC/DME I-OND <b>111.55</b> Chan <b>52 (Y)</b>	APP CRS <b>267°</b>	Rwy Idg TDZE <b>95</b> Apt Elev <b>96</b>
--	------------------------	---

# ILS RWY 26R (CAT II & III)

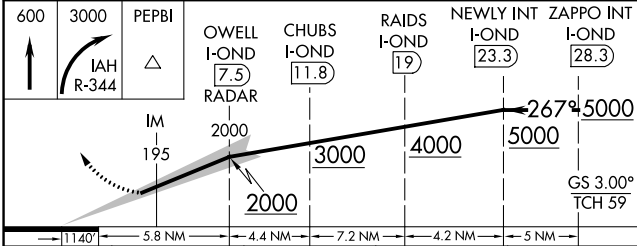
GEORGE BUSH INTCNL/HOUSTON (IAH)

DME required. From HOOTI: RNAV 1-GPS required.			ALSF-2 A	MISSED APPROACH: Climb to 600 then climbing right turn to 3000 on IAH VORTAC R-344 to PEPBI INT/IAH 20 DME and hold.	
<p>Simultaneous approach authorized with Rwy 26L and Rwy 27. Cat II: RVR 1000 authorized with specific OPSPEC, MSPEC or LOA approval and use of autoland or HUD to touchdown.</p>					
D-ATIS <b>124.05</b>	HOUSTON APP CON <b>120.05 379.1 EAST</b> <b>124.35 316.15 WEST</b>	HOUSTON TOWER <b>120.725 290.2</b>	GND CON <b>118.575</b>	CLNC DEL <b>128.1</b>	CPDLC

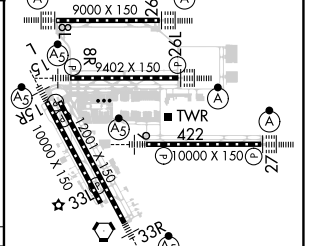


SC-5, 13 JUN 2024 to 11 JUL 2024

SC-5, 13 JUN 2024 to 11 JUL 2024



ELEV 96	TDZE 95
---------	---------



CATEGORY	A	B	C	D
S-ILS-26R	CAT II RA 99/12 100 DA 195			
S-ILS-26R	CAT III RVR 06			

## CATEGORY II & III ILS - SPECIAL AIRCREW & AIRCRAFT CERTIFICATION REQUIRED

TDZ/CL Rwy's 8R, 8L, 15R, 26R, 26L, 27 and 33L  
HIRL all Rwy's