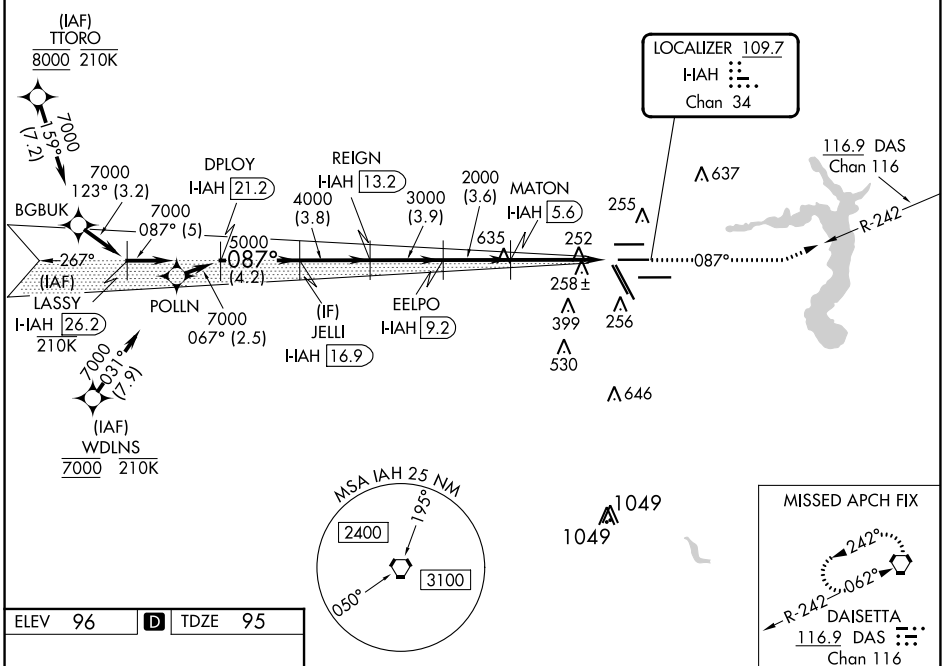


LOC/DME I-IAH 109.7 Chan 34	APP CRS 087°	Rwy Idg 9402 TDZE 95 Apt Elev 96
---	------------------------	---

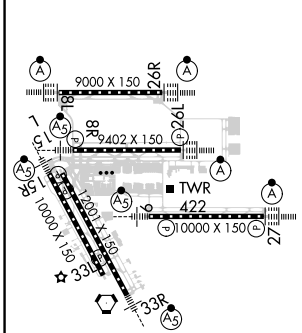
ILS RWY 8R (SA CAT I & II)

GEORGE BUSH INTCNL/HOUSTON (IAH)

RNAV 1-GPS or RADAR required for procedure entry, DME.		MALSR 	MISSED APPROACH: Climb to 3000 on heading 087° and on DAS VORTAC R-242 to DAS VORTAC and hold.		
Simultaneous approach authorized. SA CAT I: Requires specific OPSPEC, MSPEC, or LOA approval and use of HUD to DH. SA CAT II: Reduced lighting: requires specific OPSPEC, MSPEC, or LOA approval and use of autoland or HUD to touchdown.					
D-ATIS 124.05	HOUSTON APP CON 120.05 379.1 EAST 124.35 316.15 WEST	HOUSTON TOWER 125.35 290.2	GND CON 118.575	CLNC DEL 128.1	CPDLC A 2049



ELEV 96	D	TDZE 95
---------	----------	---------



VGSi and ILS glidepath not coincident (VGSi Angle 3.00/TCH 72).		3000	DAS				
LASSY I-IAH 26.2	DPLOY I-IAH 21.2	JELLI I-IAH 16.9	REIGN I-IAH 13.2	EELPO I-IAH 9.2	MATON INT I-IAH 5.6		
7000-087°	7000-087°	5000	4000	3000	2000		
GS 3.00°	TCH 55						
	-5 NM	-4.2 NM	-3.8	-3.9	-3.6	-5.8 NM	1040°
CATEGORY	A	B	C	D			
S-ILS 8R	SA CAT I	RA 152/14	150	DA 245			
S-ILS 8R	SA CAT II	RA 102/12	100	DA 195			

SA CATEGORY I and II ILS SPECIAL AIRCREW & AIRCRAFT CERTIFICATION REQUIRED

SC-5, 13 JUN 2024 to 11 JUL 2024

SC-5, 13 JUN 2024 to 11 JUL 2024