

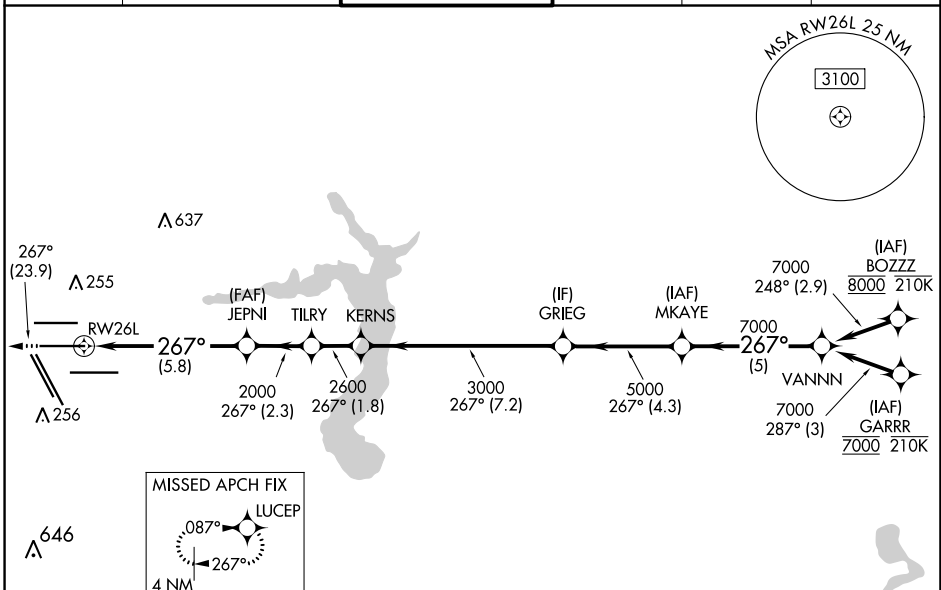
APP CRS	Rwy Idg	9402
267°	TDZE	95
	Apt Elev	96

RNAV (RNP) Y RWY 26L

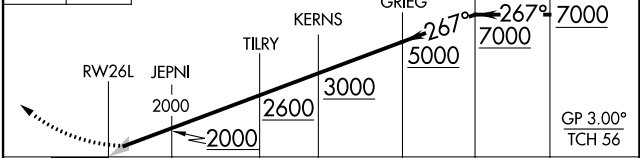
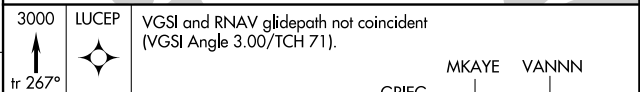
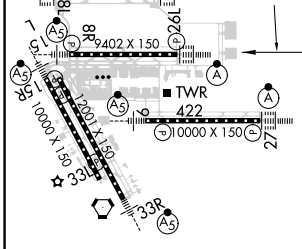
GEORGE BUSH INTCNL/HOUSTON (IAH)

RNP AR APCH - GPS.		ALSF-2 	MISSED APPROACH: Climb to 3000 on track 267° to LUCEP and hold.
For uncompensated Baro-VNAV systems, procedure NA below -3°C or above 54°C. Simultaneous approach authorized. For inop ALS, increase RNP 0.13 all Cats visibility to RVR 5100, and RNP 0.30 all Cats visibility to 1½ SM.			

D-ATIS	HOUSTON APP CON	HOUSTON TOWER	GND CON	CLNC DEL	CPDLC
124.05	120.05 379.1 EAST 124.35 316.15 WEST	125.35 290.2	118.575	128.1	



ELEV 96	D	TDZE 95
---------	----------	---------



CATEGORY	A	B	C	D
RNP 0.13 DA		414/40	319 (400-¾)	
RNP 0.30 DA		549/55	454 (500-1)	

TDZ/CL Rwy 8, 8L, 15R, 26R, 26L, 27 and 33L
HIRL all Rwy

AUTHORIZATION REQUIRED

SC-5, 13 JUN 2024 to 11 JUL 2024

SC-5, 13 JUN 2024 to 11 JUL 2024