

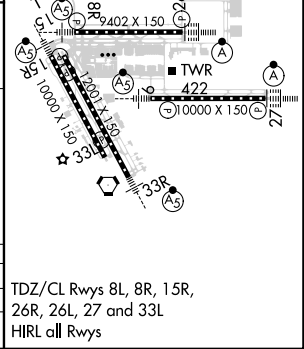
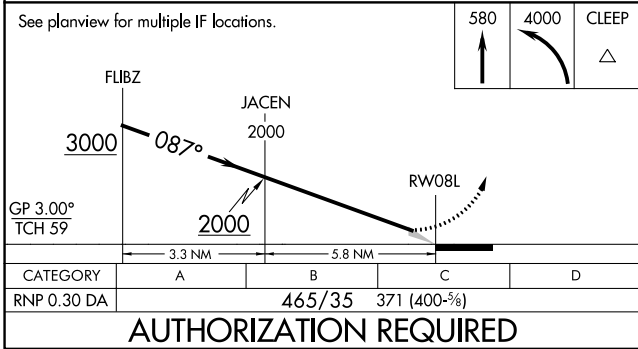
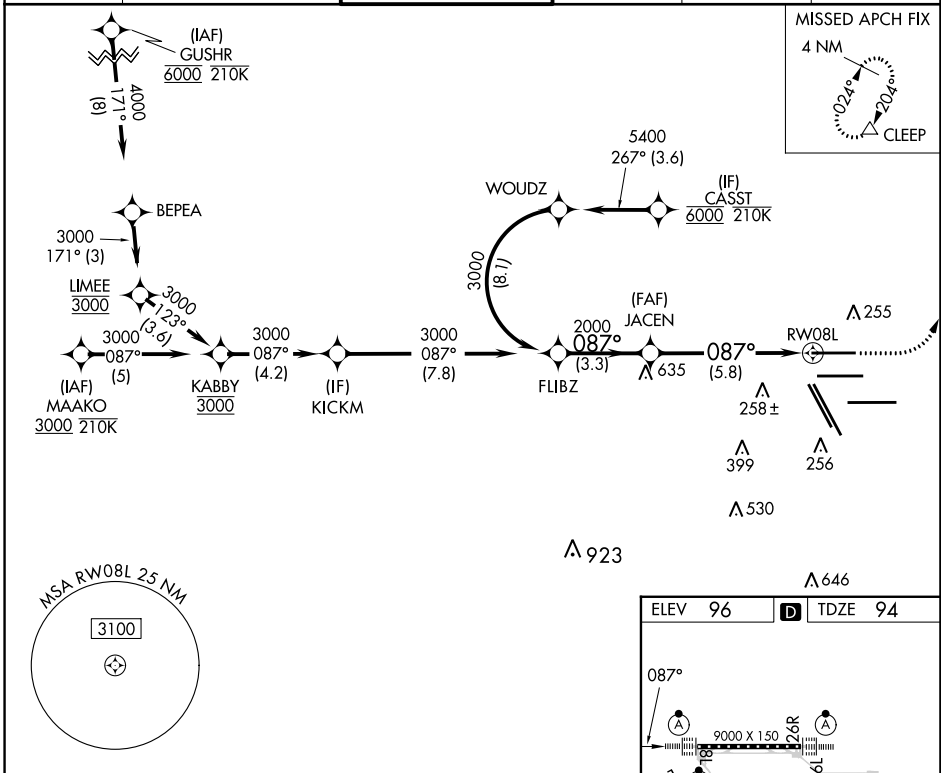
APP CRS	Rwy Idg	9000
087°	TDZE	94
	Apt Elev	96

RNAV (RNP) Y RWY 8L

GEORGE BUSH INTCNL/HOUSTON (IAH)

RNP AR APCH-GPS.	ALSF-2	MISSED APPROACH: Climb to 580 then climbing left turn to 4000 direct CLEEP and hold.
<p>Simultaneous approach authorized. For uncompensated Baro-VNAV systems, procedure NA below -2°C or above 54°C. Use of FD or AP providing RNAV track guidance required during simultaneous operations. For inop ALS, increase RNP 0.30 all Cats visibility to RVR 5500.</p>		

D-ATIS	HOUSTON APP CON	HOUSTON TOWER	GND CON	CLNC DEL	CPDLC
124.05	120.05 379.1 EAST 124.35 316.15 WEST	120.72 290.2	121.7	128.1	



See planview for multiple IF locations.	580	4000	CLEEP
	↑	↶	△
FLIBZ	JACEN	RW08L	
3000	2000		
GP 3.00°			
TCH 59			
	3.3 NM	5.8 NM	
CATEGORY	A	B	C
RNP 0.30 DA	465/35 371 (400- ² / ₃)		
AUTHORIZATION REQUIRED			
TDZ/CL Rwsy 8L, 8R, 15R, 26R, 26L, 27 and 33L			
HIRL all Rwsy			

SC-5, 13 JUN 2024 to 11 JUL 2024

SC-5, 13 JUN 2024 to 11 JUL 2024