

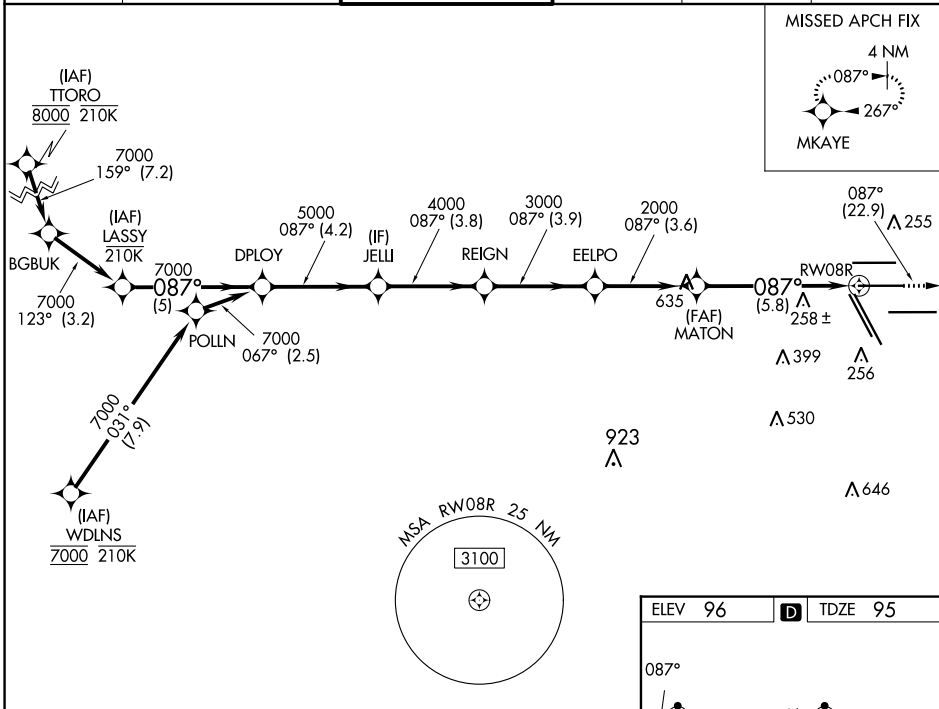
APP CRS	Rwy Idg	<b>9402</b>
<b>087°</b>	TDZE	<b>95</b>
	Apt Elev	<b>96</b>

# RNAV (RNP) Y RWY 8R

GEORGE BUSH INTCNL/HOUSTON (IAH)

RNP AR APCH.		MALSR	MISSED APPROACH: Climb to 3000 on track 087° to MKAYE and hold.
<p>For uncompensated Baro-VNAV systems, procedure NA below -3°C or above 54°C. For inop ALS increase RNP 0.13 all Cats visibility to RVR 4500, RNP 0.14 all Cats visibility to RVR 5600, RNP 0.30 all Cats visibility to 1¼ SM. Simultaneous approach authorized.</p>			

D-ATIS	HOUSTON APP CON	HOUSTON TOWER	GND CON	CLNC DEL	CPDLC
<b>124.05</b>	<b>120.05 379.1 EAST</b> <b>124.35 316.15 WEST</b>	<b>125.35 290.2</b>	<b>118.575</b>	<b>128.1</b>	



SC-5, 13 JUN 2024 to 11 JUL 2024

SC-5, 13 JUN 2024 to 11 JUL 2024

VGSI and RNAV glidepath not coincident (VGSI Angle 3.00/TCH 72).

LASSY	DPLOY	JELLI	REIGN	EELPO	MATON	RW08R
7000	7000	5000	4000	3000	2000	
GP 3.00°		TCH 55				
-5 NM		A	B	C	D	
CATEGORY						
RNP 0.13 DA		383/40	288 (300-¾)			
RNP 0.14 DA		441/40	346 (400-¾)			
RNP 0.30 DA		492/45	397 (400-¾)			

