

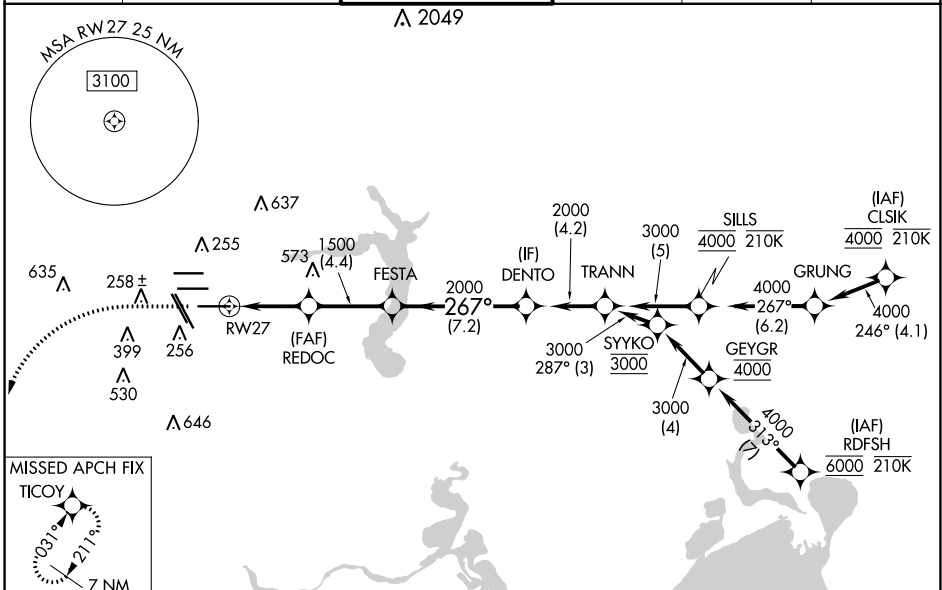
WAAS CH <b>69626</b> <b>W27A</b>	APP CRS <b>267°</b>	Rwy ldg <b>10000</b> TDZE <b>86</b> Apt Elev <b>96</b>
--	------------------------	--

# RNAV (GPS) Z RWY 27

GEORGE BUSH INTCNL/HOUSTON (IAH)

RNP APCH.	<p>Simultaneous approach authorized. LNAV procedure NA during simultaneous operations. Use of FD or AP required during simultaneous operations. For uncompensated Baro-VNAV systems, LNAV/VNAV NA below -2°C or above 54°C. For inop ALS, increase LPV Cat E visibility to RVR 4000, LNAV/VNAV Cat E visibility to RVR 6000, and LNAV Cats C, D and E visibility to 1<math>\frac{3}{8}</math> SM.</p>	<p>ALSF-2</p>	<p>MISSED APPROACH: Climb to 560 then climbing left turn to 3100 direct TICOY and hold.</p>
-----------	---	---------------	---

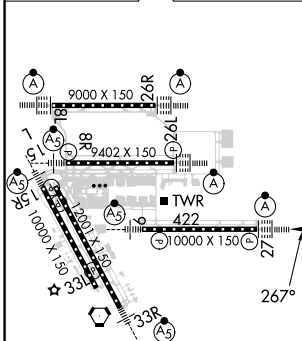
D-ATIS <b>124.05</b>	HOUSTON APP CON <b>120.05 379.1 EAST</b> <b>124.35 316.15 WEST</b>	HOUSTON TOWER <b>135.15 290.2</b>	GND CON <b>118.575</b>	CLNC DEL <b>128.1</b>	CPDLC
-------------------------	--	--------------------------------------	---------------------------	--------------------------	-------



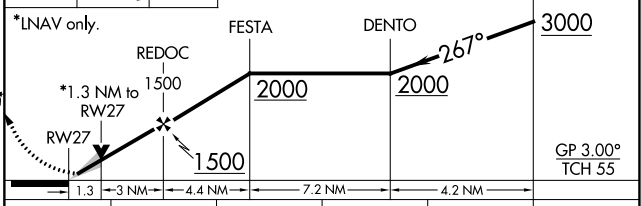
SC-5, 13 JUN 2024 to 11 JUL 2024

SC-5, 13 JUN 2024 to 11 JUL 2024

ELEV 96	<b>D</b>	TDZE 86
---------	----------	---------



560	3100	TICOY	VGSI and RNAV glidepath not coincident (VGSI Angle 3.00/TCH 70).
-----	------	-------	--



CATEGORY	A	B	C	D	E
LPV DA	286/18		200 (200- $\frac{1}{2}$ )		
LNAV/VNAV DA	476/35		390 (400- $\frac{5}{8}$ )		
LNAV MDA	560/24	474 (500- $\frac{1}{2}$ )	560/50		474 (500-1)