

D-ATIS
 124.05
 CLNC DEL
 128.1
 CPDLC
 GND CON
 118.575 (Rwys 8L/R, 26L/R, 9/27)
 121.7 (Rwys 15L/R, 33L/R)
 HOUSTON TOWER
 120.725 290.2 (Rwys 8L/26R)
 125.35 290.2 (Rwys 8R/26L)
 127.3 288.25 (Rwys 15L/R, 33L/R)
 135.15 290.2 (Rwys 9/27)
 HOUSTON DEP CON
 132.25 285.425

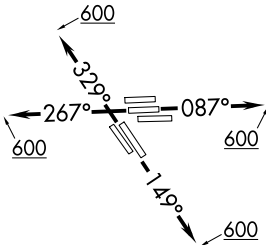
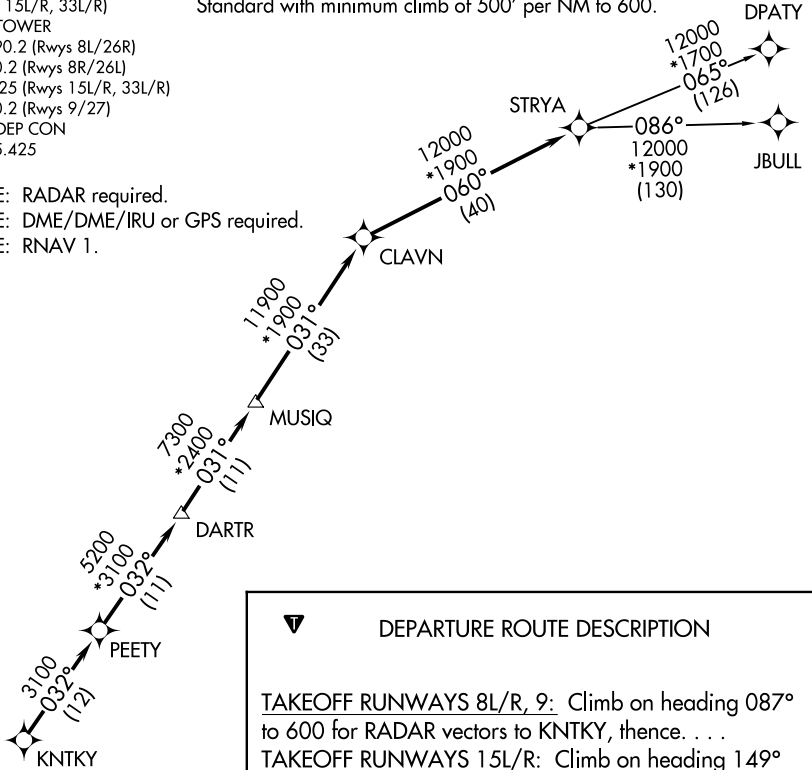
TAKEOFF MINIMUMS

Rwys 8L/R, 9, 15L/R, 26L/R, 27, 33L/R:

Standard with minimum climb of 500' per NM to 600.

**TOP ALTITUDE:
 16000**

- NOTE: RADAR required.
- NOTE: DME/DME/IRU or GPS required.
- NOTE: RNAV 1.



NOTE: Chart not to scale.

DEPARTURE ROUTE DESCRIPTION

TAKEOFF RUNWAYS 8L/R, 9: Climb on heading 087° to 600 for RADAR vectors to KNTKY, thence. . . .

TAKEOFF RUNWAYS 15L/R: Climb on heading 149° to 600 for RADAR vectors to KNTKY, thence. . . .

TAKEOFF RUNWAYS 26L/R, 27: Climb on heading 267° to 600 for RADAR vectors to KNTKY, thence. . . .

TAKEOFF RUNWAYS 33L/R: Climb on heading 329° to 600 for RADAR vectors to KNTKY, thence. . . .

. . . .on track 032° to PEETY, then on track 032° to DARTR, then on track 031° to MUSIQ, then on track 031° to CLAVN, then on track 060° to STRYA, then on (transition). Maintain 16000 or as assigned by ATC. Expect filed altitude 10 minutes after departure.

DPATY TRANSITION (STRYA8.DPATY)
JBULL TRANSITION (STRYA8.JBULL)

SC-5, 13 JUN 2024 to 11 JUL 2024

SC-5, 13 JUN 2024 to 11 JUL 2024