

NDB/DME OLT <b>346</b>	APP CRS <b>075°</b>	Rwy Idg <b>5001</b>
Chan <b>106 (115.9)</b>		TDZE <b>102</b>
		Apt Elev <b>113</b>

# NDB RWY 7

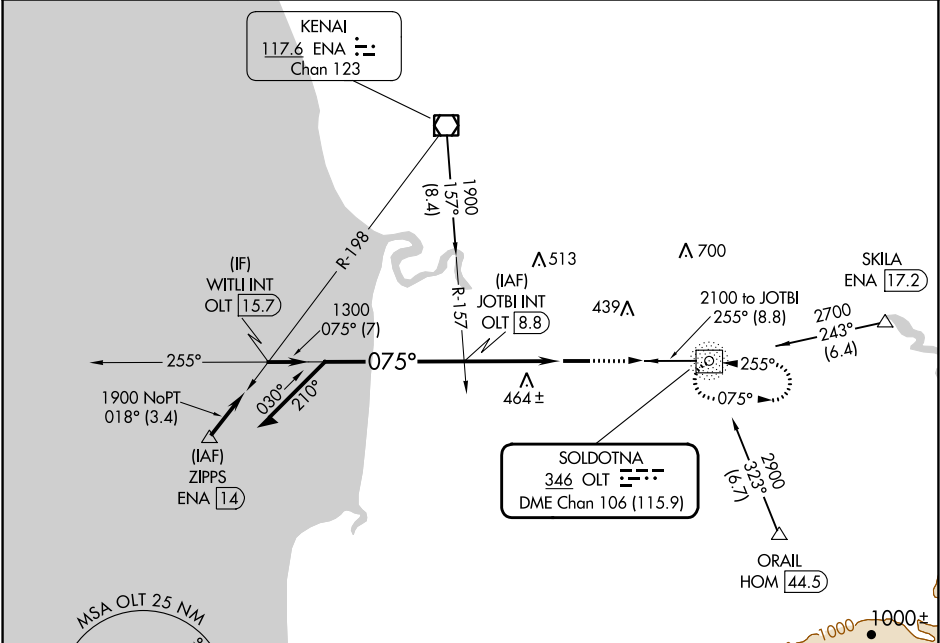
SOLDOTNA (SXQ)(PASX)



Circling NA to Rwys 7S and 25S. Straight-in Rwy 7 NA at night, Circling Rwy 7 NA at night. Rwy 7 helicopter visibility reduction below 1 SM NA.

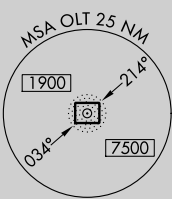
MISSED APPROACH: Climb to 2100 direct OLT NDB/DME and hold.

AWOS-3P <b>135.45</b>	ANCHORAGE CENTER <b>125.7 379.1</b>	KENAI RADIO <b>122.35</b>	CTAF <b>122.5 0</b>
--------------------------	--	------------------------------	------------------------

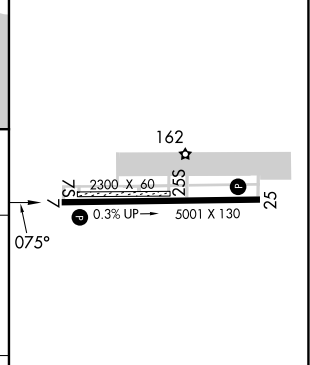
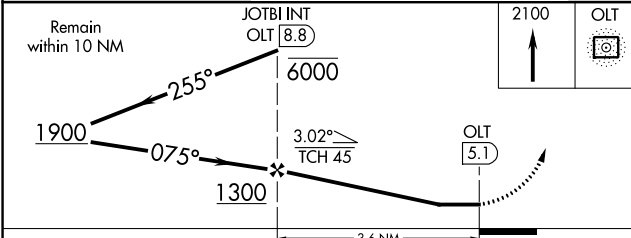


AK, 16 MAY 2024 to 11 JUL 2024

AK, 16 MAY 2024 to 11 JUL 2024



ELEV 113	TDZE 102
----------	----------



CATEGORY	A	B	C	D
S-7	860-1 758 (800-1)	860-1¼ 758 (800-1¼)	860-2½	758 (800-2½)
<b>C</b> CIRCLING	860-1 747 (800-1)	860-1¼ 747 (800-1¼)	860-2½ 747 (800-2½)	980-2¾ 867 (900-2¾)

MIRL Rwy 7-25 0	FAF to MAP 3.6 NM				
Knots	60	90	120	150	180
Min:Sec	3:36	2:24	1:48	1:26	1:12