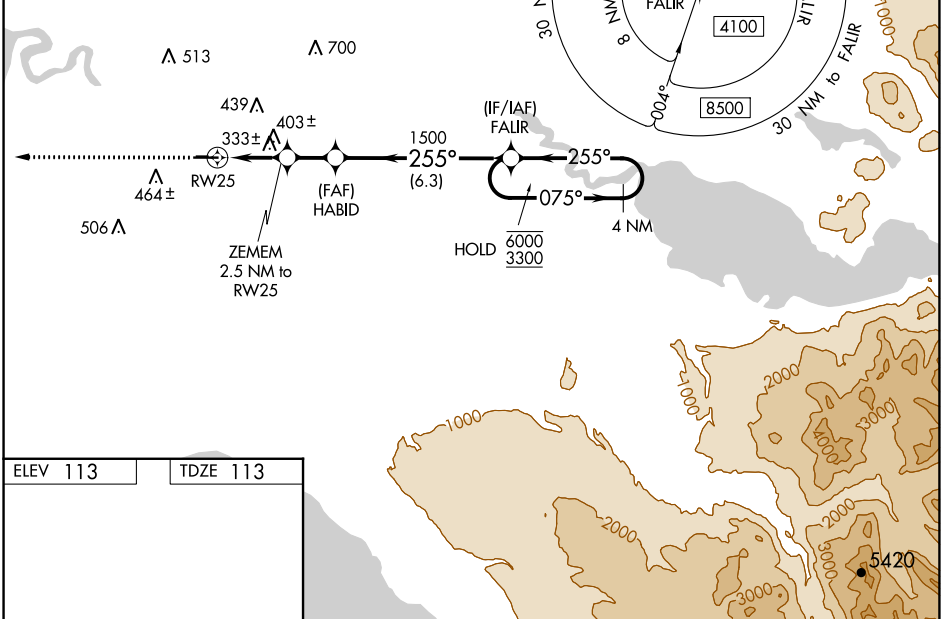
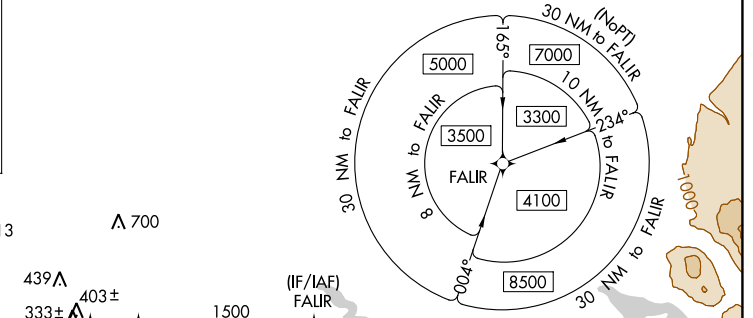
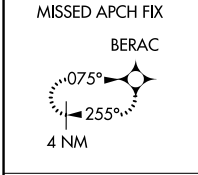


WAAS CH 86236 W25A	APP CRS 255°	Rwy Idg 5001 TDZE 113 Apt Elev 113
--	------------------------	---

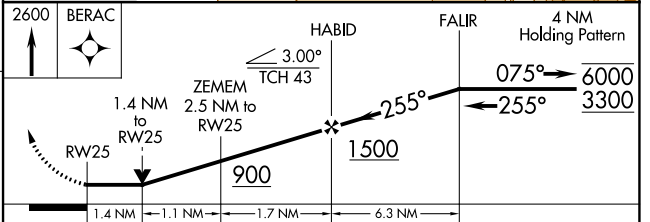
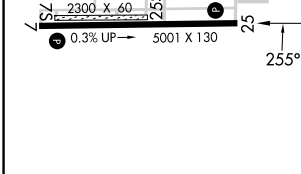
RNAV (GPS) RWY 25

SOLDOTNA (SXQ)(PASX)

RNP APCH.		MISSED APPROACH: Climb to 2600 direct BERAC and hold.	
<p>▼ Circling NA to Rwy 7S and 25S. Circling Rwy 7 NA at night.</p> <p>▲ Rwy 25 helicopter visibility reduction below 3/4 SM NA.</p>			
AWOS-3P 135.45	ANCHORAGE CENTER 125.7 379.1	KENAI RADIO 122.35	CTAF 122.50



ELEV 113	TDZE 113
----------	----------



CATEGORY	A	B	C	D
LP MDA	600-1	487 (500-1)	600-1 $\frac{3}{8}$	487 (500-1 $\frac{3}{8}$)
LNAV MDA	660-1	547 (600-1)	660-1 $\frac{5}{8}$	547 (600-1 $\frac{5}{8}$)
<input checked="" type="checkbox"/> CIRCLING	740-1 627 (700-1)	780-1 667 (700-1)	820-2 707 (800-2)	980-2 $\frac{3}{4}$ 867 (900-2 $\frac{3}{4}$)

AK, 16 MAY 2024 to 11 JUL 2024

AK, 16 MAY 2024 to 11 JUL 2024