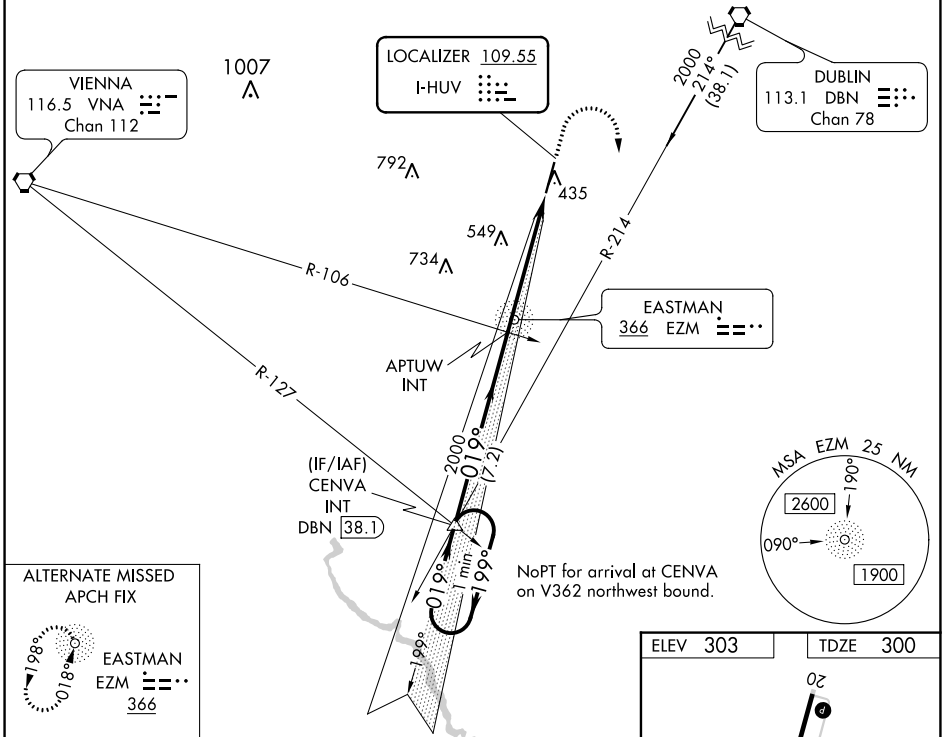


LOC I-HUV 109.55	APP CRS 019°	Rwy Idg 6506
		TDZE 300
		Apt Elev 303

ILS or LOC RWY 2

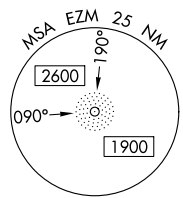
HEART OF GEORGIA RGNL (E2M)

<p>When local altimeter setting not received, use Dublin altimeter setting and increase all DA 52 feet and all MDA 60 feet; increase S-LOC 2 Cat C/D and Circling Cat C visibility ¼ mile.</p>	<p>MALS R</p>	<p>MISSED APPROACH: Climb to 800 then climbing right turn to 2000 on heading 180° and DBN VORTAC R-214 to CENVA INT and hold.</p>		
		<p>ATIS 119.425</p>	<p>JACKSONVILLE CENTER 127.575 269.025</p>	<p>HEART OF GEORGIA TOWER ★ 124.55 (CTAF) 0</p>

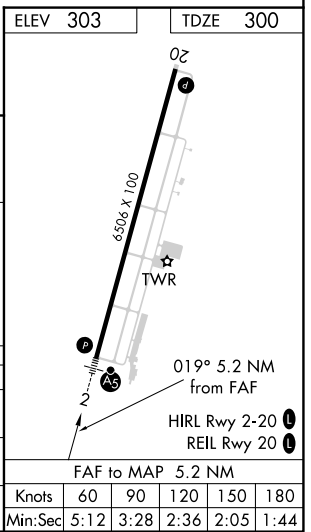
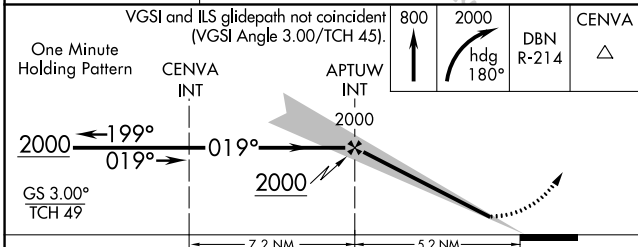


ALTERNATE MISSED APCH FIX

EASTMAN E2M 366



NoPT for arrival at CENVA on V362 northwest bound.



CATEGORY	A	B	C	D
S-ILS 2	500-½		200 (200-½)	
S-LOC 2	820-½	520 (600-½)	820-1	520 (600-1)
CIRCLING	820-1	517 (600-1)	900-1½ 597 (600-1½)	900-2 597 (600-2)

SE-4, 13 JUN 2024 to 11 JUL 2024

SE-4, 13 JUN 2024 to 11 JUL 2024