

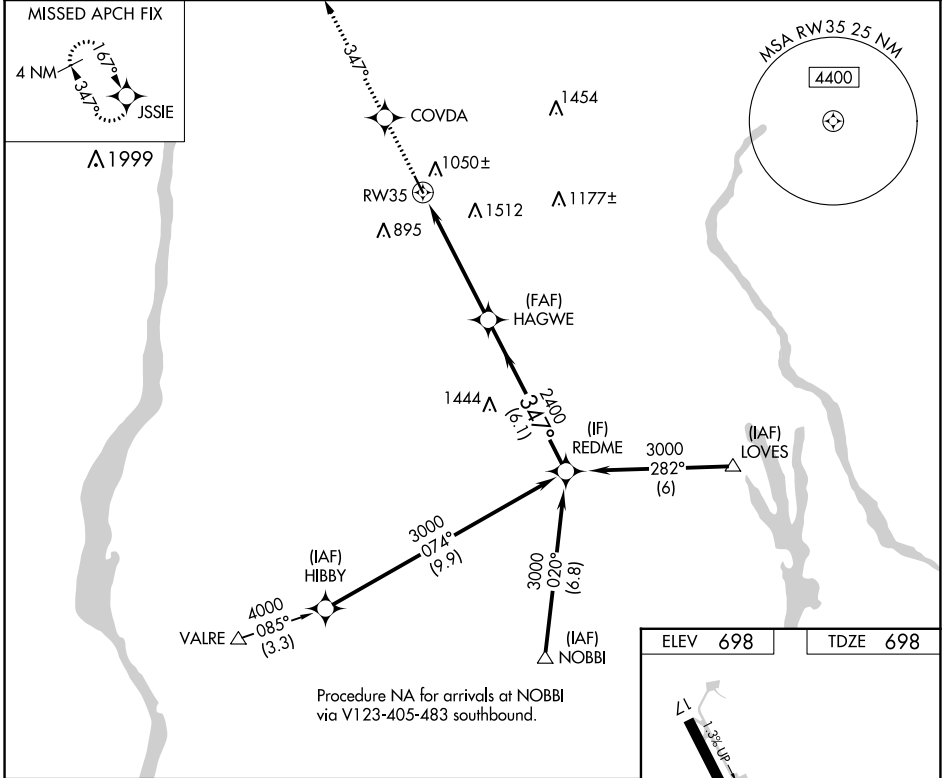
WAAS CH 86308 W35A	APP CRS 347°	Rwy Idg TDZE Apt Elev	3828 698 698
--	------------------------	-----------------------------	---

RNAV (GPS) RWY 35

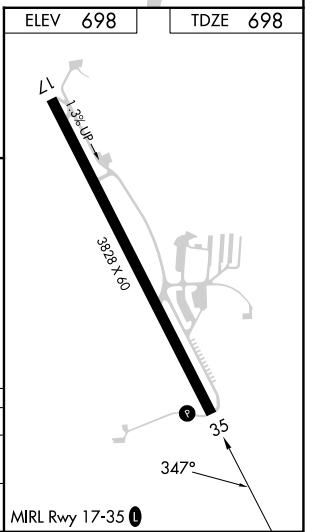
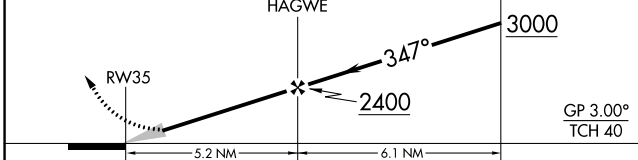
SKY ACRES (44N)

RNP APCH.	MISSED APPROACH: Climb to 3000 direct COVDA and via 347° track to JSSIE and hold.
<p>▽</p> <p>▲ NA</p> <p>☒ -23°C</p>	Use Newburgh altimeter setting; when not received use Poughkeepsie altimeter setting and increase LPV DA to 1063, and all MDA 20 feet.

SWF ASOS 124.575	POU ASOS 126.75	NEW YORK APP CON 132.75 363.1	UNICOM 122.8 (CTAF) 0
----------------------------	---------------------------	---	---------------------------------



3000	COVDA	fr 347°	JSSIE	VGSI and RNAV glidepath not coincident (VGSI Angle 3.00/TCH 33).
↑	✧		✧	REDME Procedure Turn NA



CATEGORY	A	B	C	D
LPV DA	1046-1¼	348 (400-1¼)		NA
INAV MDA	1700-1¼ 1002 (1100-1¼)	1700-1½ 1002 (1100-1½)		NA

NE-2, 13 JUN 2024 to 11 JUL 2024

NE-2, 13 JUN 2024 to 11 JUL 2024