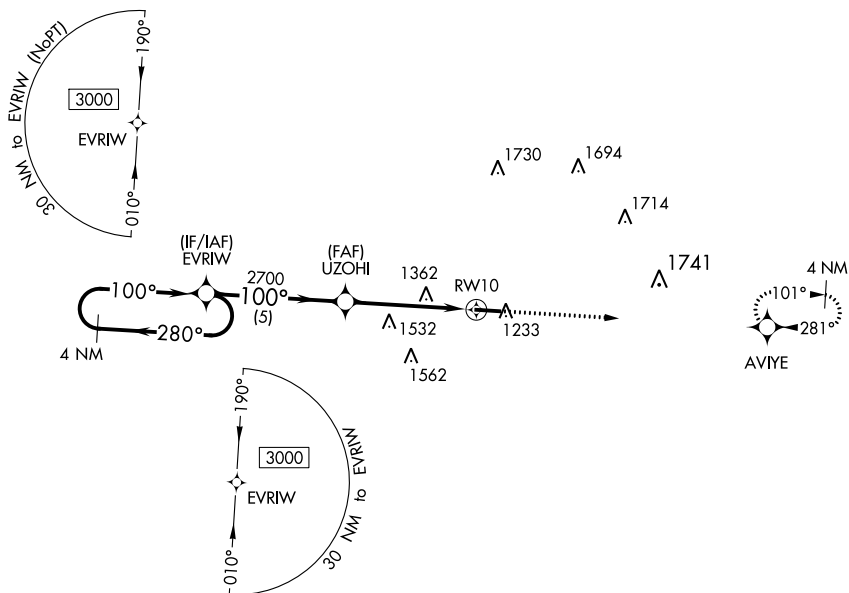


WAAS CH <b>77534</b> <b>W10A</b>	APP CRS <b>100°</b>	Rwy Idg TDZE Apt Elev	<b>5000</b> <b>1172</b> <b>1184</b>
--	------------------------	-----------------------------	---

# RNAV (GPS) RWY 10

HILLSDALE MUNI (JYM)

<p><b>▽</b> For uncompensated Baro-VNAV systems, LNAV/VNAV NA below -17°C (2°F) or above 54°C (130°F). DME/DME RNP-0.3 NA.</p>		<p>MISSED APPROACH: Climb to 3100 direct AVIYE and hold.</p>
<p>AWOS-3 <b>121.025</b></p>	<p>TOLEDO APP CON <b>134.35 317.55</b></p>	<p>UNICOM <b>122.8 (CTAF) 0</b></p>



EC-1, 13 JUN 2024 to 11 JUL 2024

EC-1, 13 JUN 2024 to 11 JUL 2024

ELEV 1184 TDZE 1172

REIL Rwy 10 and 28 **0**  
HIRL Rwy 10-28 **0**

4 NM Holding Pattern		EVRIW		3100	AVIYE
3000 ← 280°		100° →		2700	*1.6 NM to RWY 10
GP 3.00°		TCH 46		2700	*LNAV only
5 NM		3.1 NM		1.6 NM	
CATEGORY	A	B	C	D	
LPV DA	1441-1		269 (300-1)		NA
LNAV/VNAV DA	1601-1½		429 (500-1½)		NA
LNAV MDA	1720-1	548 (600-1)		1720-1⅝ 548 (600-1⅝)	
<b>C</b> CIRCLING	1720-1	536 (600-1)		1720-1⅝ 536 (600-1⅝)	