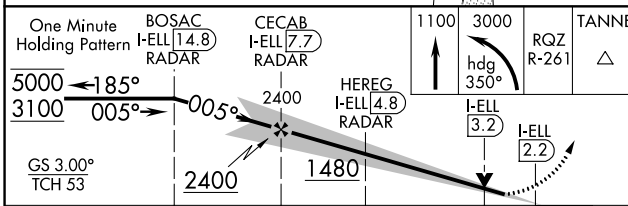
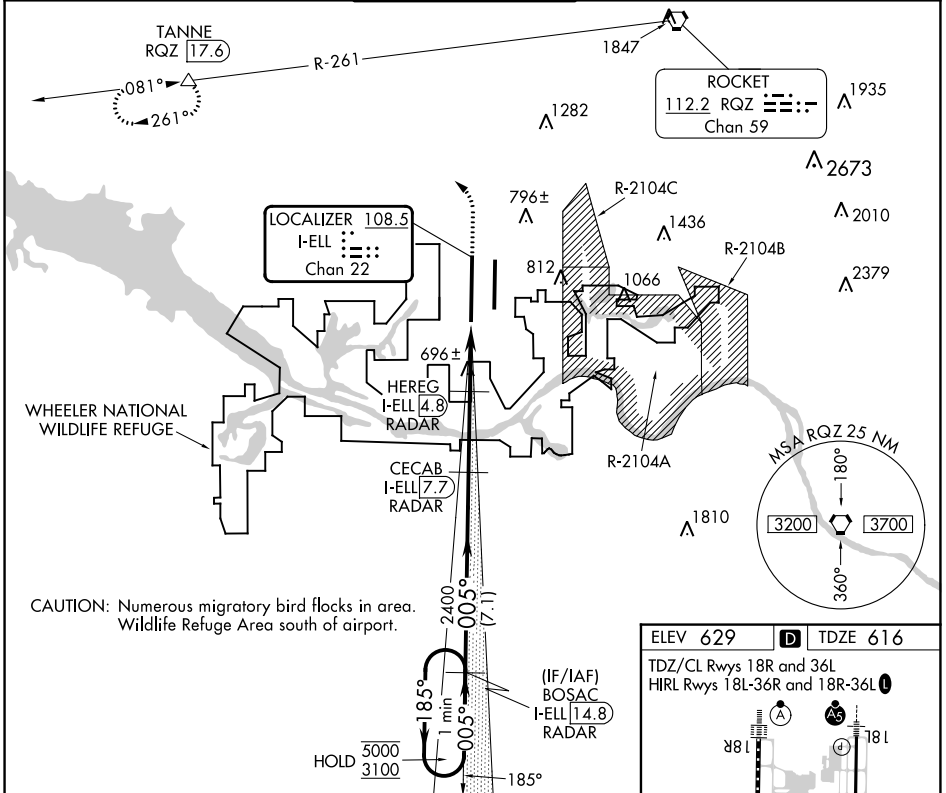


LOC/DME I-ELL <b>108.5</b> Chan <b>22</b>	APP CRS <b>005°</b>	Rwy Idg <b>12600</b> TDZE <b>616</b> Apt Elev <b>629</b>
---	------------------------	--

# ILS or LOC RWY 36L

HUNTSVILLE INTL-CARL T JONES FLD (HSV)

DME required. RADAR required for procedure entry.		MALSR	MISSED APPROACH: Climb to 1100 then climbing left turn to 3000 on heading 350° and RQZ R-261 to TANNE/RQZ 17.6 DME and hold.		
ATIS <b>121.25</b>	HUNTSVILLE APP CON * <b>125.6 354.1</b>	HUNTSVILLE TOWER * <b>127.6 (CTAF) 0 350.35</b>	GND CON <b>121.9 269.525</b>	CLNC DEL <b>120.35</b>	UNICOM <b>122.95</b>



ELEV 629	TDZE 616
TDZ/CL Rws 18R and 36L HIRL Rws 18L-36R and 18R-36L	
FAF to MAP 5.5 NM	
Knots	60 90 120 150 180
Min:Sec	6:42 4:28 3:21 2:41 2:14

CATEGORY	A	B	C	D	E
S-ILS 36L	816/18 200 (200-½)				
S-LOC 36L	960/24	344 (400-½)	960/30	344 (400-¾)	
CIRCLING	1160-1	531 (600-1)	1160-1½ 531 (600-½)	1240-2 611 (700-2)	1260-2¼ 631 (700-2¼)

SE-4, 13 JUN 2024 to 11 JUL 2024

SE-4, 13 JUN 2024 to 11 JUL 2024