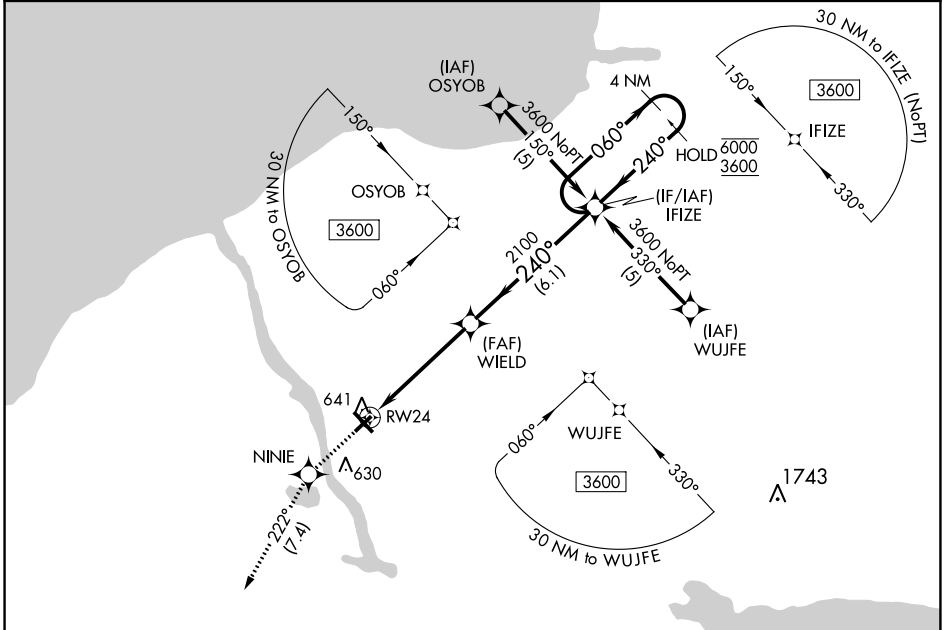


APP CRS 240°	Rwy ldg TDZE Apt Elev	3997 469 475
------------------------	-----------------------------	---

RNAV (GPS) RWY 24

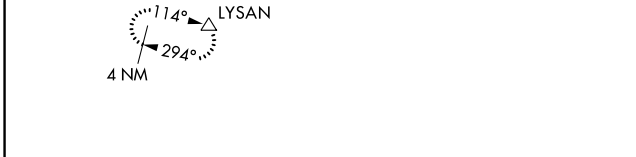
OSWEGO COUNTY (FZY)

RNP APCH.	MISSED APPROACH: Climb to 3000 direct NINIE and on track 222° to LYSAN and hold.
ASOS 119.275	SYRACUSE APP CON 126.125 269.125
UNICOM 123.0 (CTAF)	



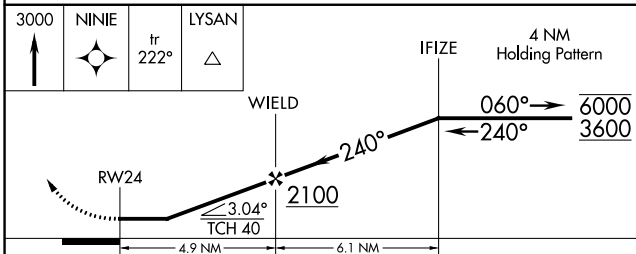
NE-2, 13 JUN 2024 to 11 JUL 2024

NE-2, 13 JUN 2024 to 11 JUL 2024



ELEV 475	TDZE 469
----------	----------

MIRL Rwy 6-24	①
HIRL Rwy 15-33	①
REIL Rwy 15 and 33	①
REIL Rwy 6 and 24	①



CATEGORY	A	B	C	D
LNVA MDA	960-1 491 (500-1)	960-1 491 (500-1 3/8)	960-1 1/2 491 (500-1 1/2)	960-1 1/2 565 (600-2)
CIRCLING	1000-1 525 (600-1)	1000-1 1/2 525 (600-1 1/2)	1040-2 565 (600-2)	