

EMPORIA, VIRGINIA

AL-5534 (FAA)

23278

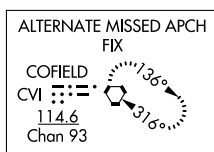
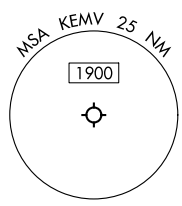
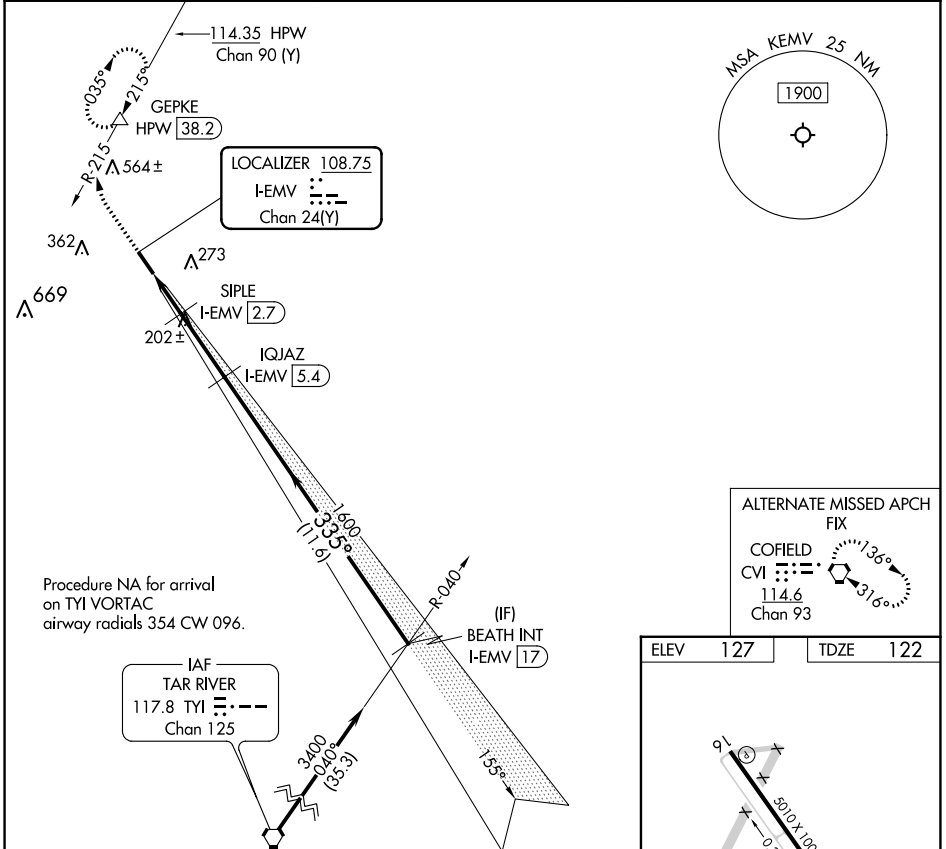
LOC/DME I-EMV <b>108.75</b> Chan <b>24(Y)</b>	APP CRS <b>335°</b>	Rwy Idg TDZE <b>122</b> Apt Elev <b>127</b>	<b>5010</b>
---	------------------------	---	-------------

# LOC RWY 34

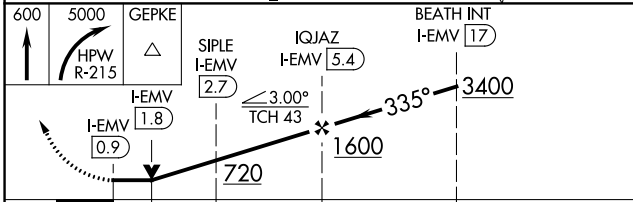
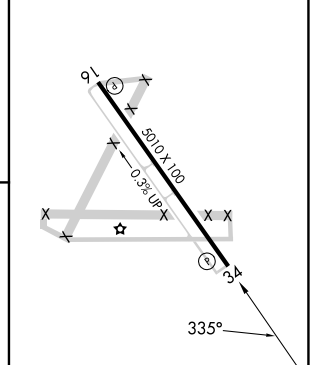
EMPORIA-GREENSVILLE RGNL (EMV)

DME required. ▼ ▲ NA	MISSED APPROACH: Climb to 600 then climbing right turn to 5000 on HPW VORTAC R-215 to GEPKE/HPW 38.2 DME and hold, continue climb-in-hold to 5000.
----------------------------	--

AWOS-3 <b>124.175</b>	WASHINGTON CENTER <b>132.025 290.425</b>	UNICOM <b>123.0 (CTAF) 0</b>
--------------------------	---	---------------------------------



ELEV 127	TDZE 122
----------	----------



CATEGORY	A	B	C	D
S-LOC 34	460-1	338 (400-1)	680-1½ 553 (600-1½)	NA
◉ CIRCLING	580-1	453 (500-1)		NA

REIL Rwy 16 and 34	0
MIRL Rwy 16-34	0
FAF to MAP 4.6 NM	
Knots	60 90 120 150 180
Min:Sec	4:36 3:04 2:18 1:50 1:32

NE-3, 13 JUN 2024 to 11 JUL 2024

NE-3, 13 JUN 2024 to 11 JUL 2024

EMPORIA, VIRGINIA  
Amdt 2 24MAY18

36°41'N-77°29'W

EMPORIA-GREENSVILLE RGNL (EMV)  
**LOC RWY 34**