

APP CRS	Rwy Idg	<b>3900</b>
<b>036°</b>	TDZE	<b>833</b>
	Apt Elev	<b>833</b>

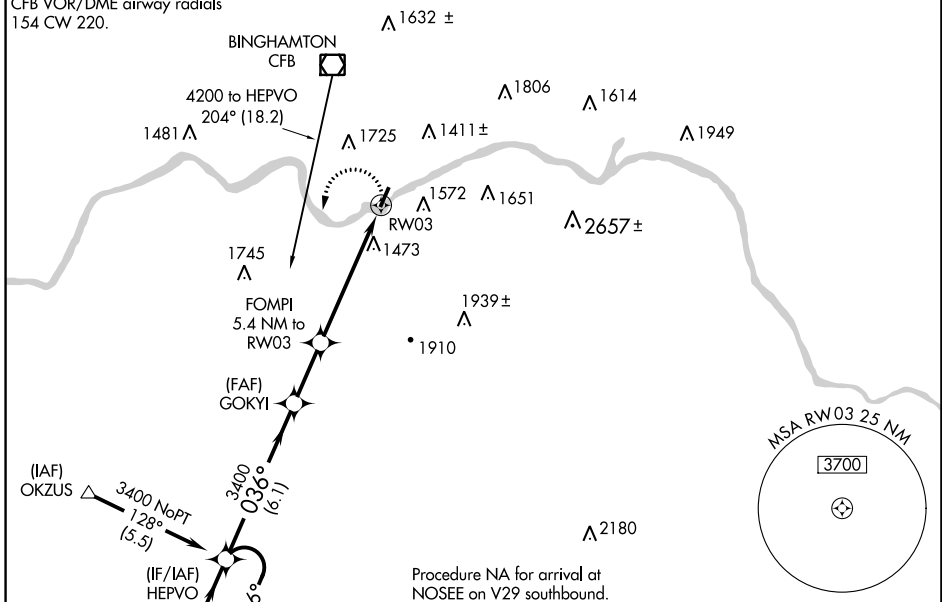
# RNAV (GPS) RWY 3

TRI-CITIES (CZG)

<b>NA</b> -17°C	DME/DME RNP-0.3 NA. Procedure NA at night. Rwy 3 helicopter visibility reduction below 1 SM NA.	MISSED APPROACH: Climbing left turn to 3400 direct HEPVO and hold.
--------------------	--	--

AWOS-3 <b>119.075</b>	BINGHAMTON APP CON * <b>118.6 257.625</b>	CLNC DEL <b>121.7</b>	UNICOM <b>122.8 (CTAF)</b>
--------------------------	--	--------------------------	-------------------------------

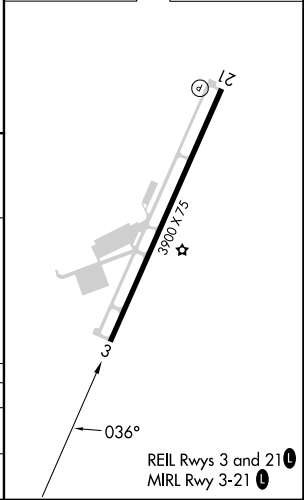
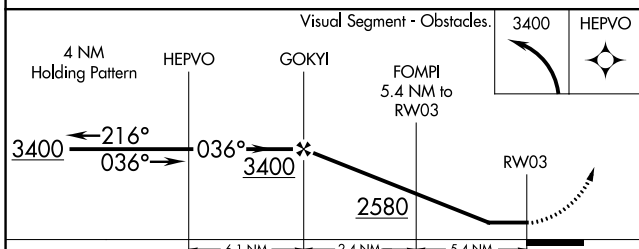
Procedure NA for arrival on CFB VOR/DME airway radials 154 CW 220.



NE-2, 13 JUN 2024 to 11 JUL 2024

NE-2, 13 JUN 2024 to 11 JUL 2024

ELEV 833	TDZE 833
----------	----------



CATEGORY	A	B	C	D
LNAV MDA	2160-1¼ 1327 (1400-1¼)	2160-1½ 1327 (1400-1½)		NA
CIRCLING	2160-1¼ 1327 (1400-1¼)	2160-1½ 1327 (1400-1½)		NA

REIL Rwy 3 and 21  
MIRL Rwy 3-21