

# BOBZY FIVE DEPARTURE (RNAV)

SALISBURY, NORTH CAROLINA

SE-2, 13 JUN 2024 to 11 JUL 2024

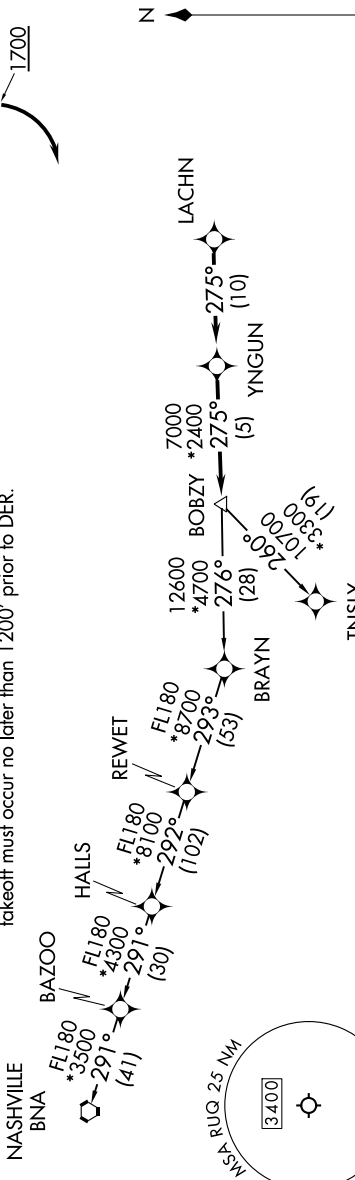
CHARLOTTE DEP CON  
128.325 307.8  
AWOS-3  
118.175  
CLNC DEL  
127.35  
UNICOM  
122.725

RNAV 1-DME/DME/IRU or GPS.  
RADAR required.

### TAKEOFF MINIMUMS

Rwy 2: Standard.  
Rwy 20: 400-2<sup>3</sup>/<sub>4</sub> or standard with minimum climb of 205' per NM to 1300, or alternatively, with standard takeoff minimums and a normal 200' per NM climb gradient, takeoff must occur no later than 1200' prior to DER.

**TOP ALTITUDE:**  
3000



### DEPARTURE ROUTE DESCRIPTION

**TAKEOFF RUNWAY 2:** Climb on heading assigned by ATC, thence, . . .  
**TAKEOFF RUNWAY 20:** Climb on heading 20° to 1700 before turning right, then on heading assigned by ATC, thence, . . .

. . . on RADAR vectors to LACHN, then on depicted route to BOBZY, then on assigned transition. Maintain 3000, expect clearance to filed altitude within 10 minutes after departure.

NASHVILLE TRANSITION (BOBZY5.BNA)  
TNSLY TRANSITION (BOBZY5.TNSLY)

- NOTE: For turbo jets only.
- NOTE: If unable to accept climb rates, advise ATC on initial contact.
- NOTE: Transponder code will be issued via PDC or Charlotte CLNC DEL.
- NOTE: Upon reaching 10000 MSL, accelerate to and maintain 280K, if unable advise ATC.

NOTE: Chart not to scale.

# BOBZY FIVE DEPARTURE (RNAV)

SE-2, 13 JUN 2024 to 11 JUL 2024