

LOC I-RUQ <b>109.95</b>	APP CRS <b>202°</b>	Rwy Idg TDZE Apt Elev <b>5501</b> <b>772</b> <b>772</b>
----------------------------	------------------------	--

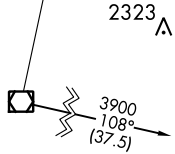
# ILS or LOC RWY 20

MID-CAROLINA RGNL (RUQ)

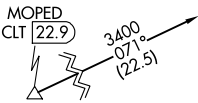
<p><b>ADF REQUIRED</b></p> <p>ADF required. When local altimeter setting not received, use Lexington altimeter setting and increase all DA 37 feet and all MDA 40 feet; increase S-LOC Cats C/D visibility 1/8 SM and Circling Cat D visibility 1/4 SM. For inop ALS when using Lexington altimeter setting, increase S-LOC 20 Cats C and D visibility to 1 3/4 mile.</p>	<p>MALSR</p>	<p>MISSED APPROACH: Climb to 1600 then climbing right turn to 2900 direct ROVDY LOM and hold.</p>	
AWOS-3 <b>118.175</b>	CHARLOTTE APP CON <b>128.325 307.8</b>	CLNC DEL <b>127.35</b>	UNICOM <b>122.725 (CTAF)</b>

## ADF REQUIRED

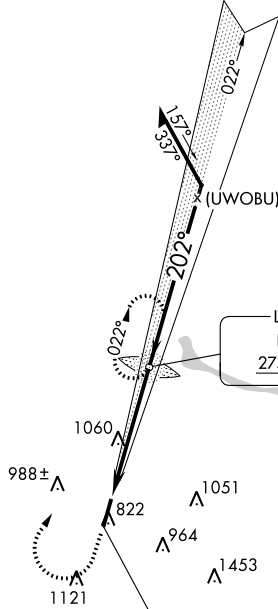
**BARRETT'S MOUNTAIN**  
113.75 BZM  
Chan 84(Y)



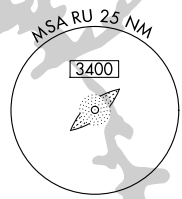
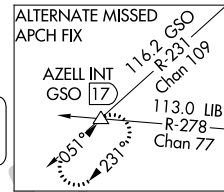
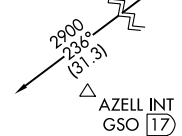
1730 A



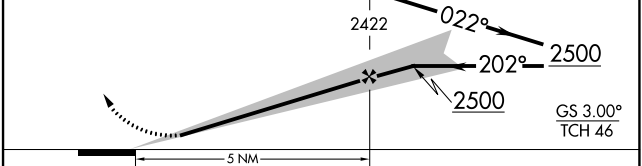
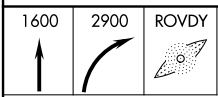
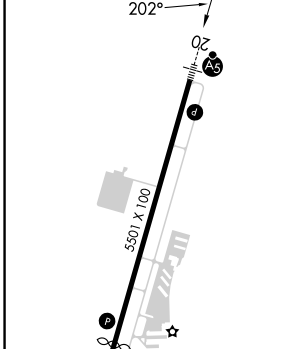
1848 A



**GREENSBORO**  
116.2 GSO  
Chan 109



ELEV 772	TDZE 772
----------	----------



CATEGORY	A	B	C	D
S-ILS 20	972-1/2		200 (200-1/2)	
S-LOC 20	1360-1/2 588 (600-1/2)		1360-1/4 588 (600-1/4)	
<input checked="" type="checkbox"/> CIRCLING	1360-1 588 (600-1)		1440-1 3/4 668 (700-1 3/4) 1440-2 668 (700-2)	

FAF to MAP 5 NM

Knots	60	90	120	150	180
Min:Sec	5:00	3:20	2:30	2:00	1:40

SE-2, 13 JUN 2024 to 11 JUL 2024

SE-2, 13 JUN 2024 to 11 JUL 2024