

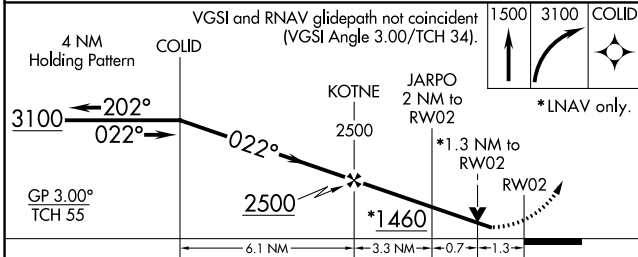
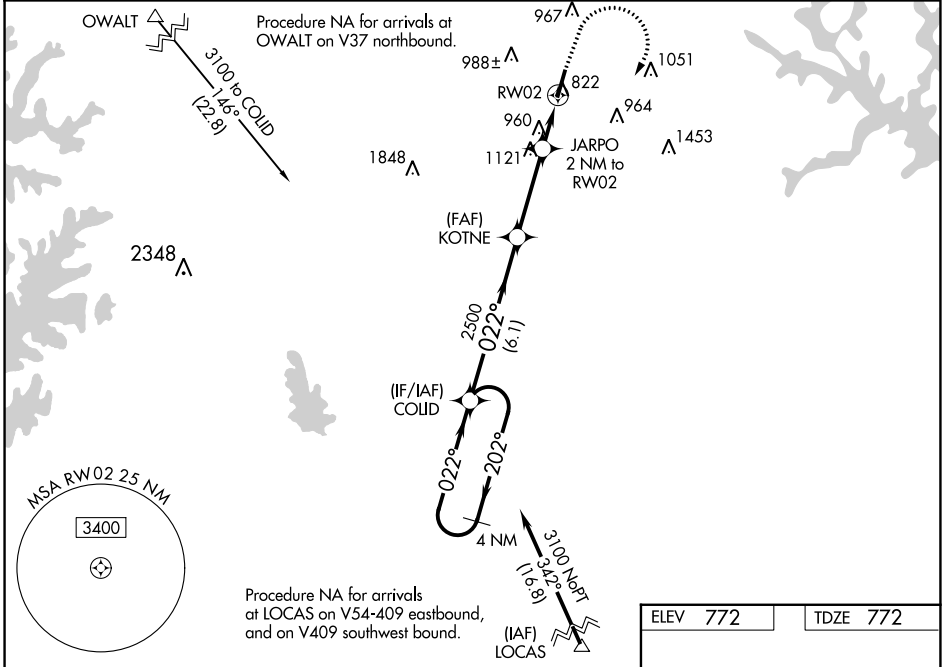
WAAS CH 40321 W02A	APP CRS 022°	Rwy Ldg TDZE Apt Elev	5375 772 772
--	------------------------	-----------------------------	---

RNAV (GPS) RWY 2

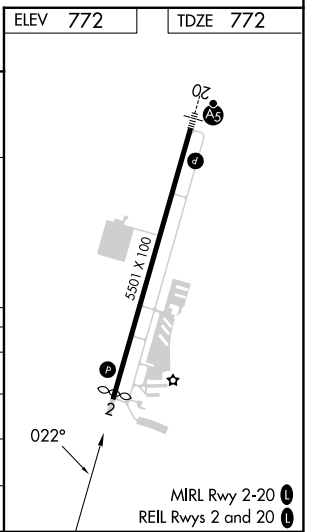
MID-CAROLINA RGNL (RUQ)

RNP APCH.	MISSED APPROACH: Climb to 1500 then climbing right turn to 3100 direct COLID and hold.
<p>▼ For uncompensated Baro-VNAV systems, LNAV/VNAV NA below -16°C or above 54°C. Rwy 2 helicopter visibility reduction below 3/4 SM NA.</p>	

AWOS-3 118.175	CHARLOTTE APP CON 128.325 307.8	CLNC DEL 127.35	UNICOM 122.725 (CTAF)
--------------------------	---	---------------------------	---------------------------------



CATEGORY	A	B	C	D
LPV DA	1138-1 366 (400-1)			
LNAV/VNAV DA	1181-1 1/8 409 (500-1 1/8)			
LNAV MDA	1220-1 448 (500-1)	1220-1 3/8 448 (500-1 3/8)		
CIRCLING	1220-1 448 (500-1)	1260-1 488 (500-1)	1440-1 3/4 668 (700-1 3/4)	1440-2 668 (700-2)



SE-2, 13 JUN 2024 to 11 JUL 2024

SE-2, 13 JUN 2024 to 11 JUL 2024