

WAAS CH 90208 W18A	APP CRS 181°	Rwy ldg 4997 TDZE 1191 Apt Elev 1191
--	------------------------	---

RNAV (GPS) RWY 18

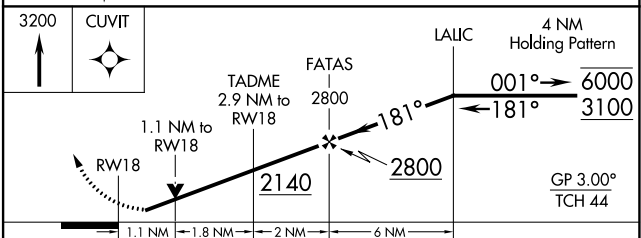
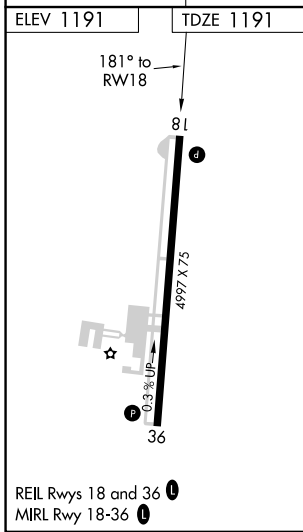
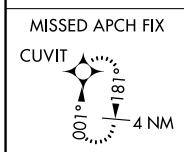
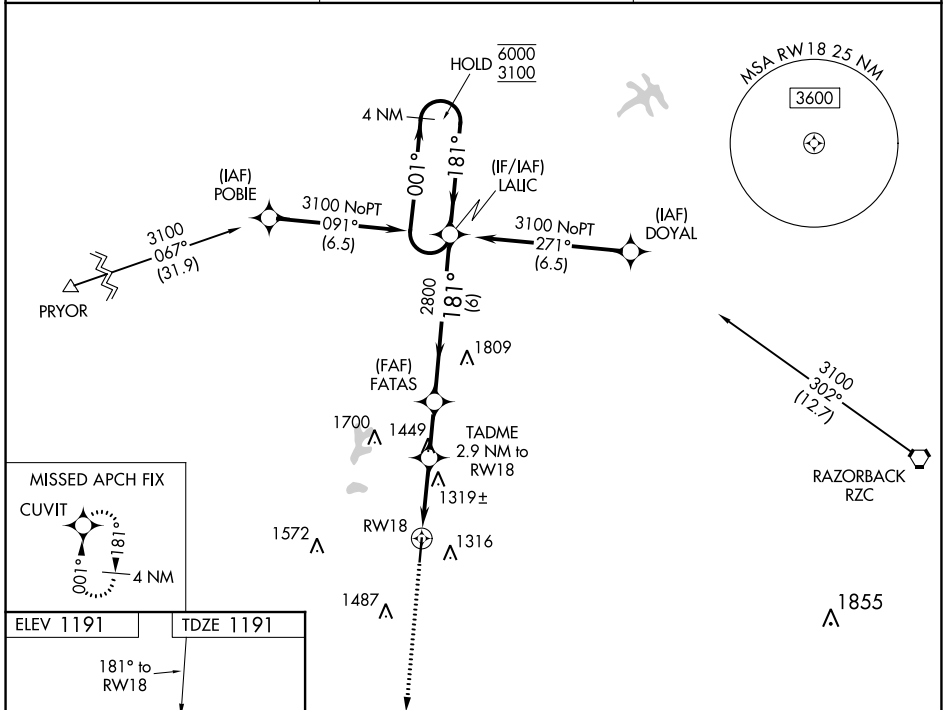
SMITH FLD (SLG)

RNP APCH-GPS.

▽ Rwy 18 helicopter visibility reduction below 3/4 SM NA.
▲ For uncompensated Baro-VNAV systems, LNAV/VNAV NA below -17°C or above 54°C.

MISSED APPROACH:
 Climb to 3200 direct
 CUVIT and hold.

AWOS-3PT 118.375	RAZORBACK APP CON ★ 121.0 244.575	UNICOM 122.8 (CTAF) 0
----------------------------	---	---------------------------------



CATEGORY	A	B	C	D
LPV DA		1513-1	322 (400-1)	
LNAV/VNAV DA		1598-1½	407 (500-1½)	
LNAV MDA	1580-1	389 (400-1)	1580-1½	389 (400-1½)
C CIRCLING	1620-1 429 (500-1)	1720-1 529 (600-1)	1800-1¾ 609 (700-1¾)	1880-2¼ 689 (700-2¼)

SC-1, 13 JUN 2024 to 11 JUL 2024

SC-1, 13 JUN 2024 to 11 JUL 2024