

HAVRE, MONTANA

AL-5575 (FAA)

21 280

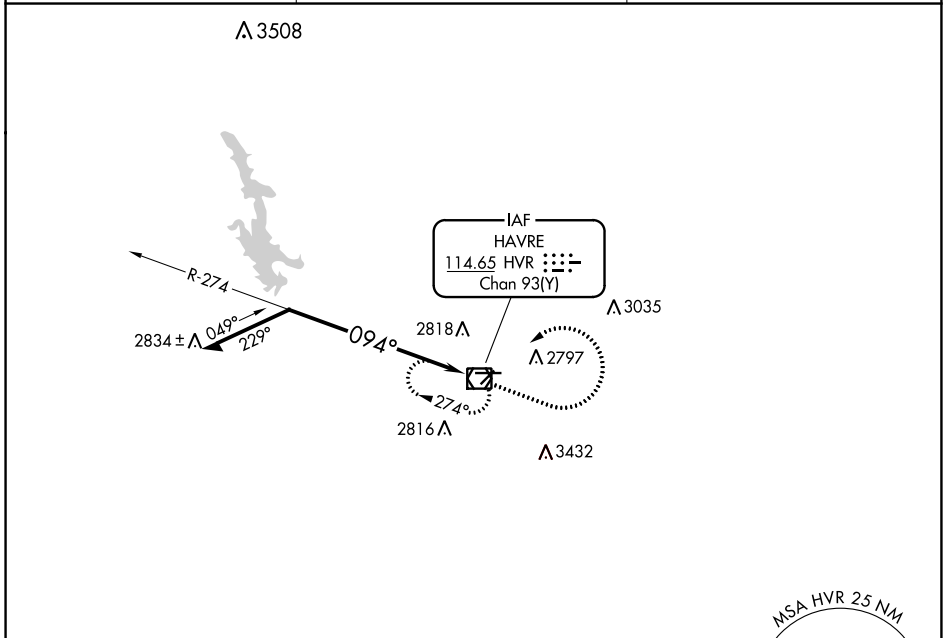
VOR/DME HVR <b>114.65</b> Chan 93(Y)	APP CRS <b>094°</b>	Rwy Idg TDZE Apt Elev	<b>5205</b> <b>2585</b> <b>2591</b>
--	------------------------	-----------------------------	---

# VOR RWY 8

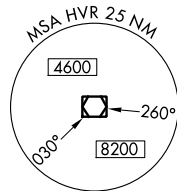
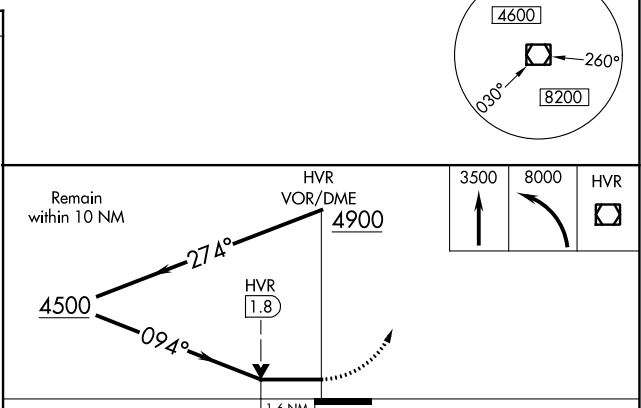
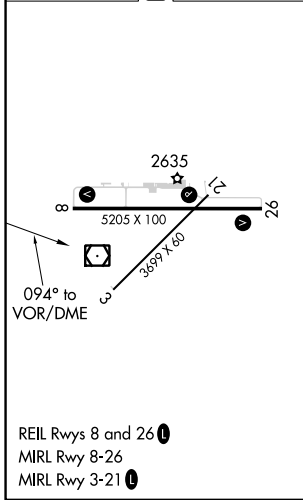
HAVRE CITY-COUNTY (HVR)

**⚠** MISSED APPROACH: Climb to 3500 then climbing left turn to 8000 direct HVR VOR/DME and hold, continue climb-in-hold to 8000.

ASOS <b>135.225</b>	SALT LAKE CENTER <b>133.4 285.4</b>	UNICOM <b>122.8 (CTAF)</b>
------------------------	--	-------------------------------



ELEV 2591	<b>D</b>	TDZE 2585
-----------	----------	-----------



CATEGORY	A	B	C	D
S-8	3140-1 555 (600-1)		3140-1 $\frac{5}{8}$ 555 (600-1 $\frac{5}{8}$ )	
CIRCLING	3140-1 549 (600-1)		3360-2 $\frac{1}{4}$ 769 (800-2 $\frac{1}{4}$ )	3740-3 1149 (1200-3)

HAVRE, MONTANA  
Amdt 7B 07OCT21

48°33'N-109°46'W

HAVRE CITY-COUNTY (HVR)  
**VOR RWY 8**

NW-1, 13 JUN 2024 to 11 JUL 2024

NW-1, 13 JUN 2024 to 11 JUL 2024