

WAAS CH 60913 W36A	APP CRS 359°	Rwy Idg 5500 TDZE 902 Apt Elev 910
--	------------------------	---

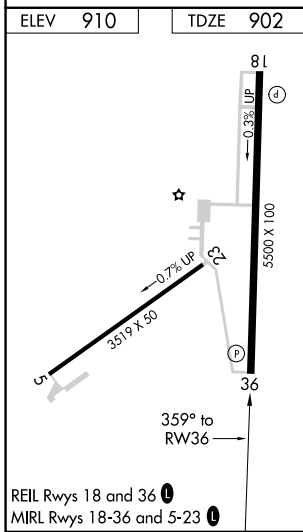
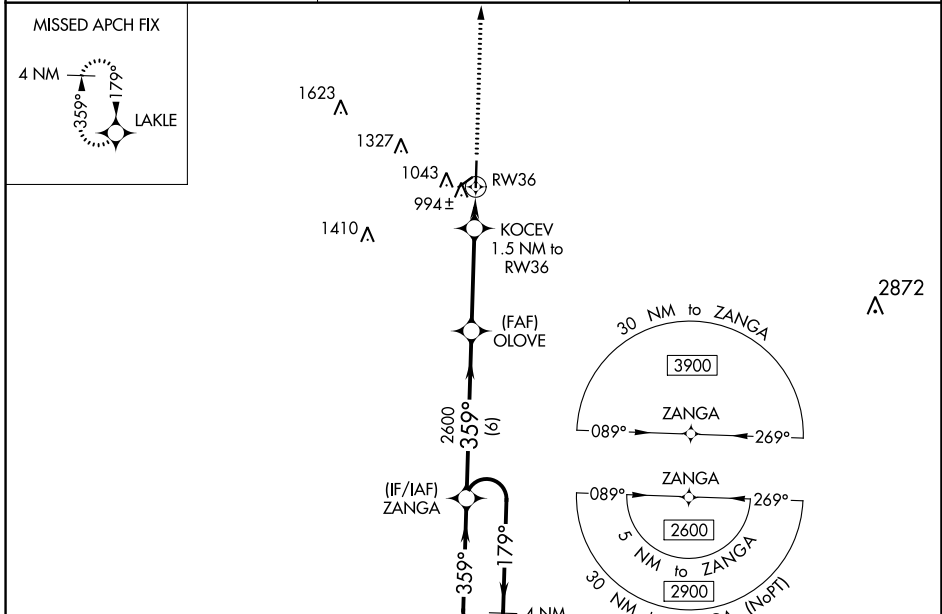
RNAV (GPS) RWY 36

SEDALIA RGNL (D/MO)

⚠ DME/DME RNP-0.3 NA. When local altimeter setting not received, use Whiteman AFB altimeter setting: increase all DA 46 feet; increase all MDA 60 feet and LNAV visibility Cats C/D 1/8 mile, Circling Cats C/D 1/4 mile. For uncompensated Baro-VNAV systems, LNAV/VNAV NA below -1.6°C (3°F) or above 54°C (130°F). Baro-VNAV and VDP NA when using Whiteman AFB altimeter setting. Helicopter visibility reduction below 3/4 SM NA. Night Landing Rwy 5, 23 NA.

MISSED APPROACH: Climb to 2600 direct LAKLE and hold.

ASOS 120.525	WHITEMAN APP CON * 127.45 284.0	UNICOM 122.8 (CTAF) 0
------------------------	---	---------------------------------



ELEV 910	TDZE 902	VGSI and RNAV glidepath not coincident (VGSI Angle 3.00/TCH 44).				2600	LAKLE
4 NM Holding Pattern ZANGA		OLOVE		KOCEV 1.5 NM to RW36		*LNAV only	
GP 3.00° TCH 45		2600		*1420		RW36	
6 NM		3.7 NM		1.5			
CATEGORY	A	B	C	D			
LPV DA	1152-1		250 (300-1)				
LNAV/VNAV DA	1155-1		253 (300-1)				
LNAV MDA	1260-1		358 (400-1)				
C CIRCLING	1360-1 450 (500-1)	1460-1 550 (600-1)	1640-2 730 (800-2)	1640-2 1/4 730 (800-2 1/4)			

NC-3, 13 JUN 2024 to 11 JUL 2024

NC-3, 13 JUN 2024 to 11 JUL 2024