

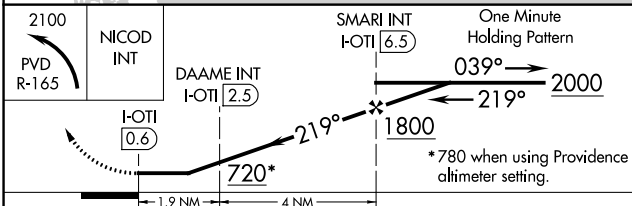
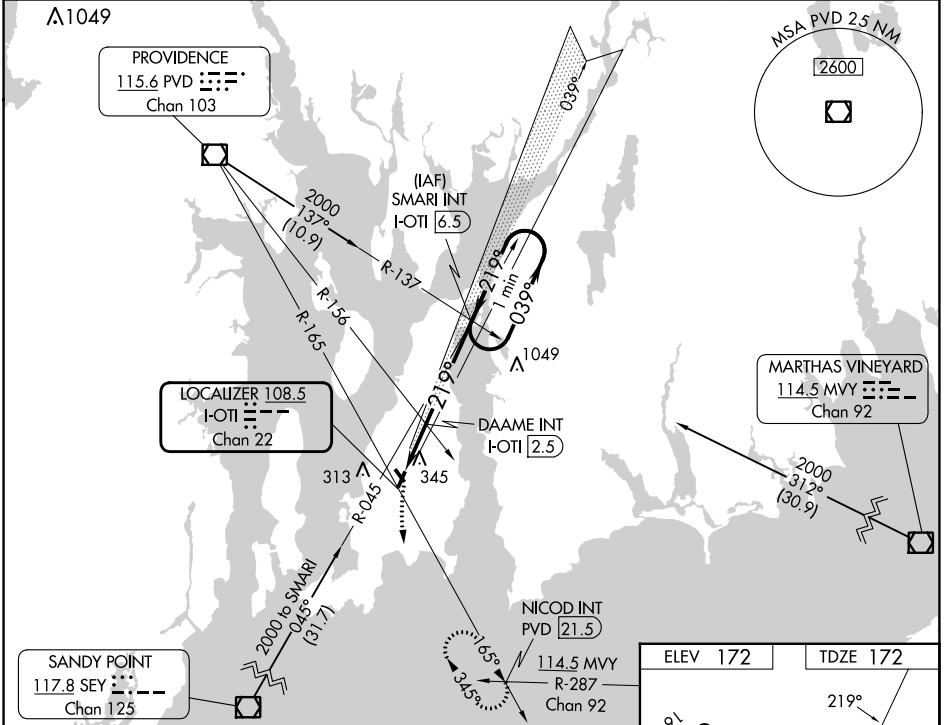
LOC/DME I-OTI 108.5 Chan 22	APP CRS 219°	Rwy Idg 2999 TDZE 172 Apt Elev 172
---	------------------------	---

LOC RWY 22
NEWPORT STATE (UUU)

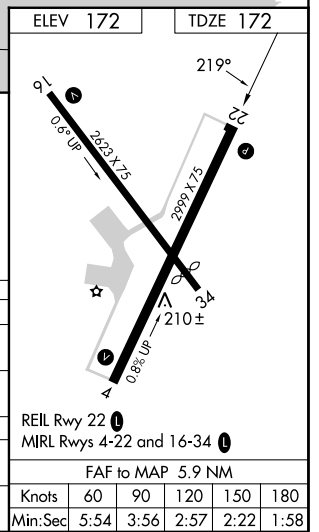
NA When local altimeter setting not received, use Providence altimeter setting and increase all MDA 60 feet. Straight-in Rwy 22 NA at night, Circling Rwy 4, 22, 34 NA at night.

MISSED APPROACH: Climbing left turn to 2100 via PVD VOR/DME R-165 to NICOD INT/21.5 DME and hold.

ASOS 132.075	PROVIDENCE APP CON* 128.7 269.525	CLNC DEL 127.25	UNICOM 123.05 (CTAF)
------------------------	---	---------------------------	--------------------------------



CATEGORY	A	B	C	D
S-22	720-1	548 (600-1)	720-1 ⁵ / ₈ 548 (600-1 ⁵ / ₈)	NA
CIRCLING	760-1	588 (600-1)	780-1 ³ / ₄ 608 (700-1 ³ / ₄)	NA
DAAME FIX MINIMUMS (DUAL VOR RECEIVERS OR DME REQUIRED)				
S-22	640-1	468 (500-1)	640-1 ¹ / ₄ 468 (500-1 ¹ / ₄)	NA
CIRCLING	760-1	588 (600-1)	780-1 ³ / ₄ 608 (700-1 ³ / ₄)	NA



NE-1, 13 JUN 2024 to 11 JUL 2024

NE-1, 13 JUN 2024 to 11 JUL 2024