

APP CRS 166°	Rwy Idg 2623
	TDZE 162
	Apt Elev 172

RNAV (GPS) RWY 16

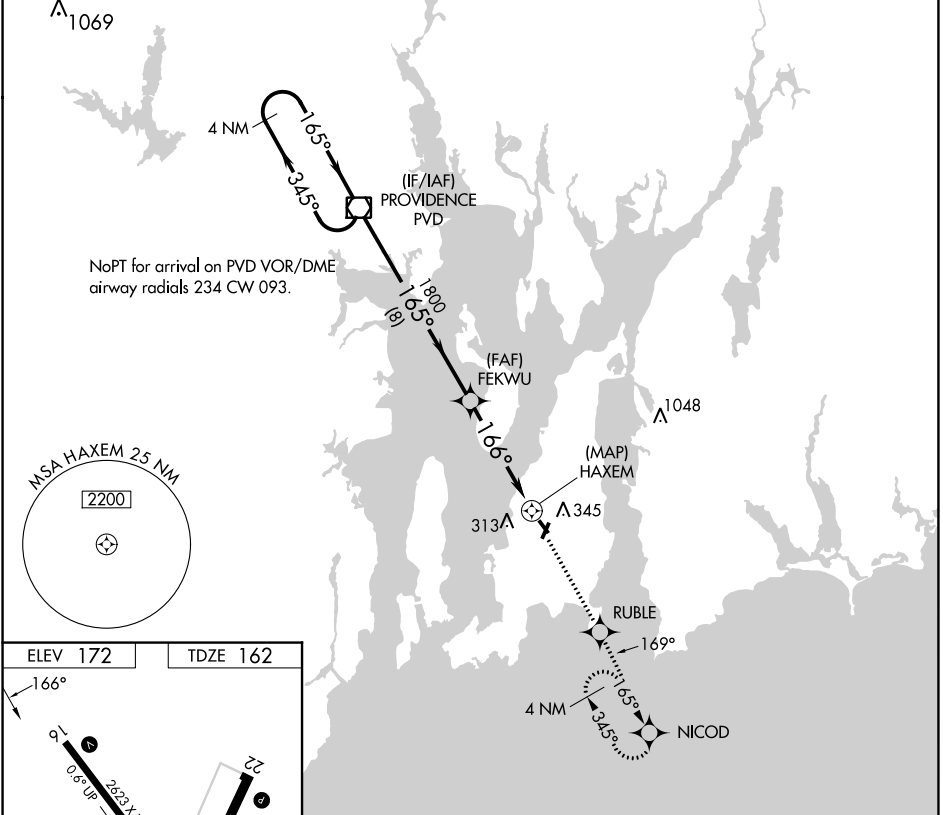
NEWPORT STATE (UUU)

RNP APCH

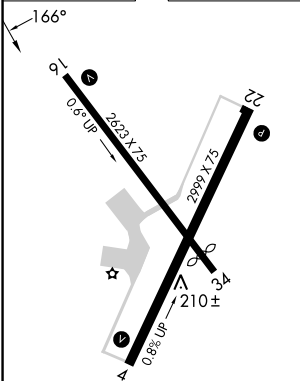
When local altimeter setting not received, use Providence altimeter setting and increase all MDAs 60 feet. Circling Rwy 4, 22, 34 NA at night.
Rwy 16 helicopter visibility reduction below $\frac{3}{4}$ SM NA.

MISSED APPROACH: Climb to 2100 direct RUBLE and via 169° track to NICOD and hold.

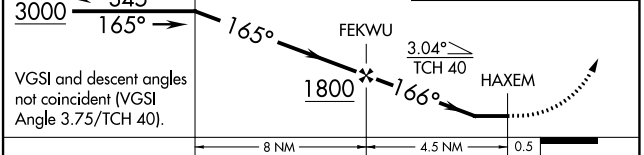
ASOS 132.075	PROVIDENCE APP CON * 128.7 269.525	CLNC DEL 127.25	UNICOM 123.05 (CTAF)
------------------------	--	---------------------------	--------------------------------



ELEV 172	TDZE 162
----------	----------



4 NM Holding Pattern	PVD VOR/DME	2100	RUBLE	tr 169°	NICOD
----------------------	-------------	------	-------	---------	-------



CATEGORY	A	B	C	D
LNAV MDA	600-1	438 (500-1)	600-1 $\frac{1}{4}$ 438 (500-1 $\frac{1}{2}$)	NA
CIRCLING	700-1 528 (600-1)	760-1 588 (600-1)	780-1 $\frac{3}{4}$ 608 (700-1 $\frac{3}{4}$)	NA

REIL Rwy 22
MIRL Rws 4-22 and 16-34

NE-1, 13 JUN 2024 to 11 JUL 2024

NE-1, 13 JUN 2024 to 11 JUL 2024