

(CONLE4.CONLE) 21112

AL-5596 (FAA)

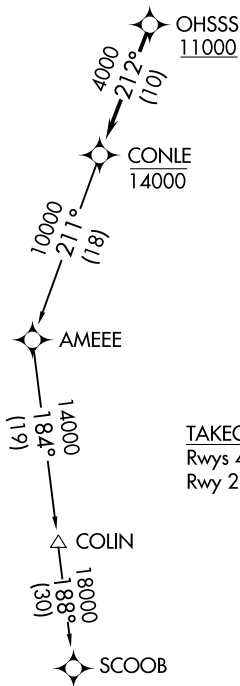
EASTON/NEWNAM FLD (E5N)  
EASTON, MARYLAND

# CONLE FOUR DEPARTURE (RNAV)

ATIS  
124.475  
CLNC DEL  
119.075  
119.075  
GND CON  
119.075  
EASTON TOWER ★  
118.525 (CTAF)  
POTOMAC DEP CON  
124.55 317.425

NOTE: RNAV 1.  
NOTE: DME/DME/IRU or GPS required.  
NOTE: RADAR required.  
NOTE: For turbojet aircraft only.

**TOP ALTITUDE:  
ASSIGNED BY ATC**



**TAKEOFF MINIMUMS:**  
Rwys 4, 15, 33: Standard.  
Rwy 22: 300-2 or standard with minimum climb  
of 245' per NM to 500.

NOTE: Chart not to scale.



## DEPARTURE ROUTE DESCRIPTION

Climb on assigned heading to ATC assigned altitude, for vectors to cross OHSSS at or above 11000, then on track 212° to cross CONLE at or below 14000, then on assigned transition. Expect filed altitude within 10 minutes after departure.

COLIN TRANSITION (CONLE4.COLIN)

SCOOB TRANSITION (CONLE4.SCOOB)

CONLE FOUR DEPARTURE (RNAV)  
(CONLE4.CONLE) 31DEC20

EASTON, MARYLAND  
EASTON/NEWNAM FLD (E5N)

NE-3, 13 JUN 2024 to 11 JUL 2024

NE-3, 13 JUN 2024 to 11 JUL 2024