

LOC/DME I-FGH <b>109.35</b> Chan <b>30 (Y)</b>	APP CRS <b>041°</b>	Rwy Idg <b>4775</b> TDZE <b>58</b> Apt Elev <b>72</b>
--	------------------------	---

# ILS or LOC RWY 4

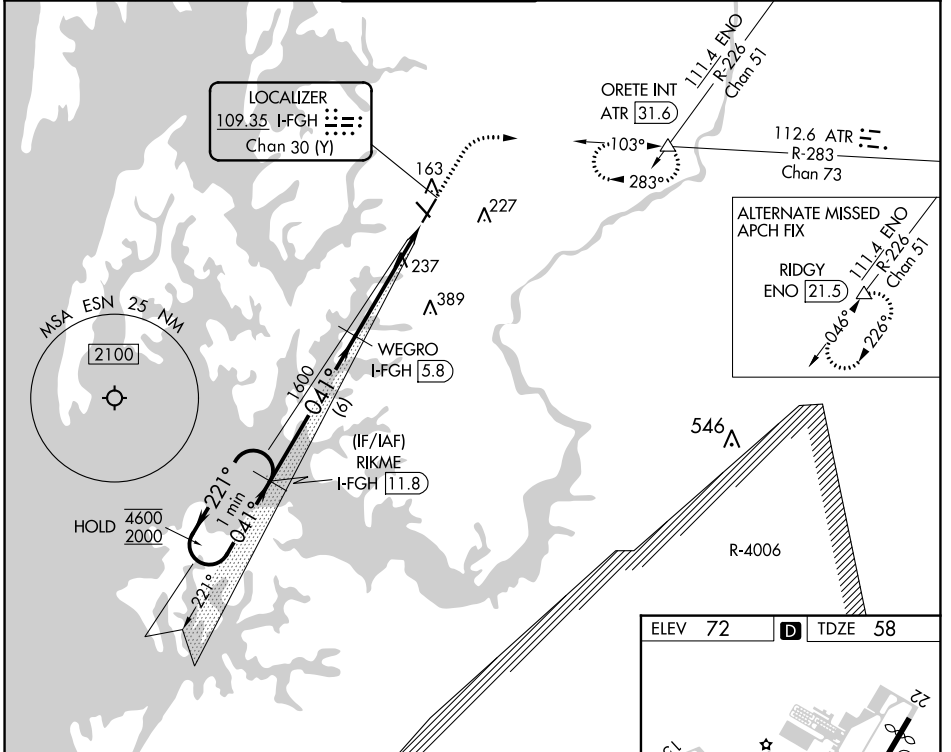
EASTON/NEWNAM FLD (ESN)

RADAR and DME required for procedure entry. DME required for LOC only.

**⚠** Circling Rwy 15, 33 NA at night. Autopilot coupled approach NA below 1000.

MISSED APPROACH: Climb to 2000 on heading 041° and on ATR VOR/DME R-283 to ORETE INT/ATR 31.6 DME and hold.

ATIS <b>124.475</b>	POTOMAC APP CON <b>133.75 254.35</b>	EASTON TOWER * <b>118.525 (CTAF) 1</b>	GND CON <b>119.075</b>	CLNC DEL <b>119.075</b>
------------------------	---	---	---------------------------	----------------------------



NE-3, 13 JUN 2024 to 11 JUL 2024

NE-3, 13 JUN 2024 to 11 JUL 2024

