

APP CRS <b>148°</b>	Rwy Idg <b>4003</b>
	TDZE <b>47</b>
	Apt Elev <b>72</b>

# RNAV (GPS) RWY 15

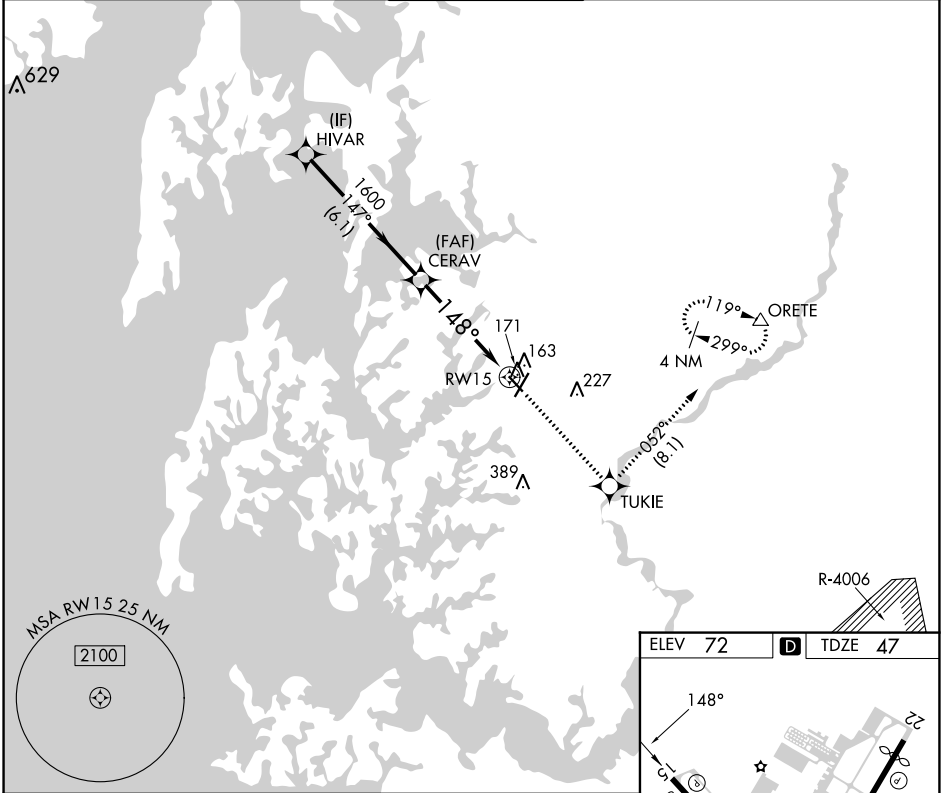
EASTON/NEWNAM FLD (ESN)

RNP APCH.

**▼** Rwy 15 helicopter visibility reduction below 1 SM NA.  
Straight-in Rwy 15 NA at night, Circling Rwy 15, 33 NA at night.

MISSED APPROACH: Climb to 2000 direct TUKIE and on track 052° to ORETE and hold.

ATIS <b>124.475</b>	POTOMAC APP CON <b>133.75 254.35</b>	EASTON TOWER ★ <b>118.525 (CTAF) 0</b>	GND CON <b>119.075</b>	CLNC DEL <b>119.075</b>
------------------------	---	---	---------------------------	----------------------------

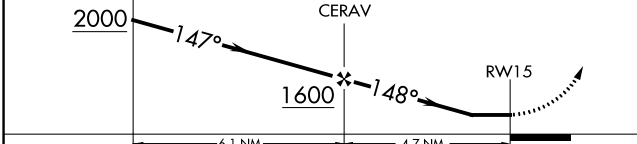


NE-3, 13 JUN 2024 to 11 JUL 2024

NE-3, 13 JUN 2024 to 11 JUL 2024

Visual Segment - Obstacles.

2000	TUKIE	ORETE
↑	✧	tr 052°



CATEGORY	A	B	C	D
LNVA MDA	440-1	393 (400-1)	440-1½ 393 (400-1½)	440-1¼ 393 (400-1¼)
<b>C</b> CIRCLING	480-1 408 (500-1)	640-1 568 (600-1)	640-1½ 568 (600-1½)	740-2 668 (700-2)

ELEV 72	<b>D</b> TDZE 47
---------	------------------

148°  
 0.5% UP  
 4003 X 100  
 5603 X 100  
 33  
 0.7% UP  
 4  
 TWR  
 HIRL Rwy 4-22 0  
 REIL Rwys 15, 22 and 33 0  
 MIRL Rwys 15-33 0