

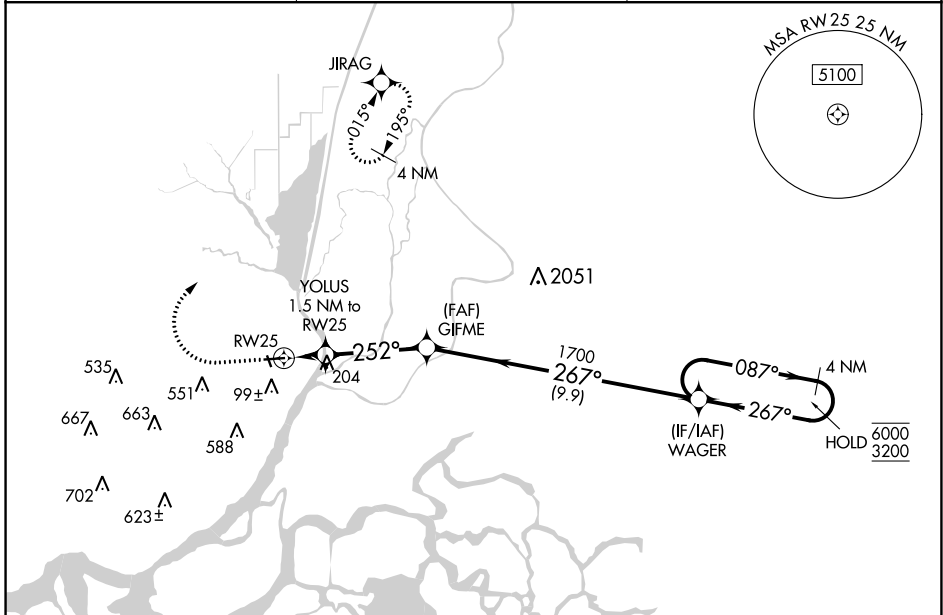
WAAS CH <b>82325</b> <b>W25A</b>	APP CRS <b>252°</b>	Rwy Idg TDZE Apt Elev	<b>4199</b> <b>23</b> <b>23</b>
--	------------------------	-----------------------------	---------------------------------------

# RNAV (GPS) RWY 25

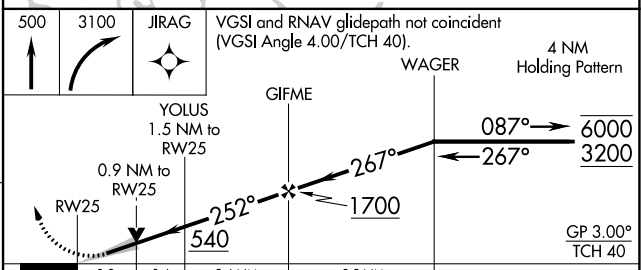
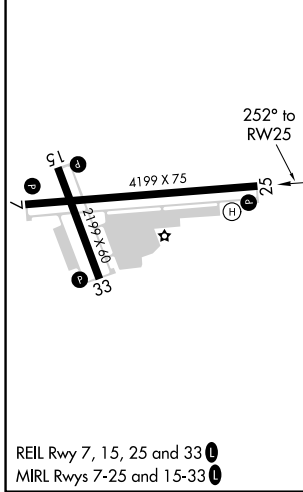
RIO VISTA MUNI (O88)

RNP APCH - GPS.	<p><b>⚠</b> Circling Rwy 33 NA at night. For uncompensated Baro-VNAV systems, LNAV/VNAV NA below -15°C or above 54°C.</p>	<p><b>⚠</b> MISSED APPROACH: Climb to 500 then climbing right turn to 3100 direct JIRAG and hold, continue climb-in-hold to 3100.</p>
<b>⚠</b> NA		

AWOS-AV <b>127.075</b>	TRAVIS APP CON <b>119.9 257.9</b>	UNICOM <b>122.725 (CTAF) 0</b>
---------------------------	--------------------------------------	-----------------------------------



ELEV 23	TDZE 23
---------	---------



CATEGORY	A	B	C	D
LPV DA	223-3/4	200 (200-3/4)		NA
LNAV/VNAV DA	353-1	330 (400-1)		NA
LNAV MDA	460-1	437 (500-1)	460-1 1/4 437 (500-1 1/4)	NA
<b>C</b> CIRCLING	460-1 437 (500-1)	600-1 577 (600-1)	940-2 3/4 917 (1000-2 3/4)	NA

SW-2, 13 JUN 2024 to 11 JUL 2024

SW-2, 13 JUN 2024 to 11 JUL 2024