

LOC I-VDI <b>110.3</b>	APP CRS <b>249°</b>	Rwy Idg TDZE Apt Elev	<b>6002</b> <b>273</b> <b>274</b>
---------------------------	------------------------	-----------------------------	---

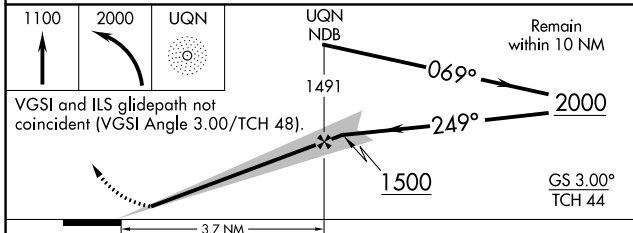
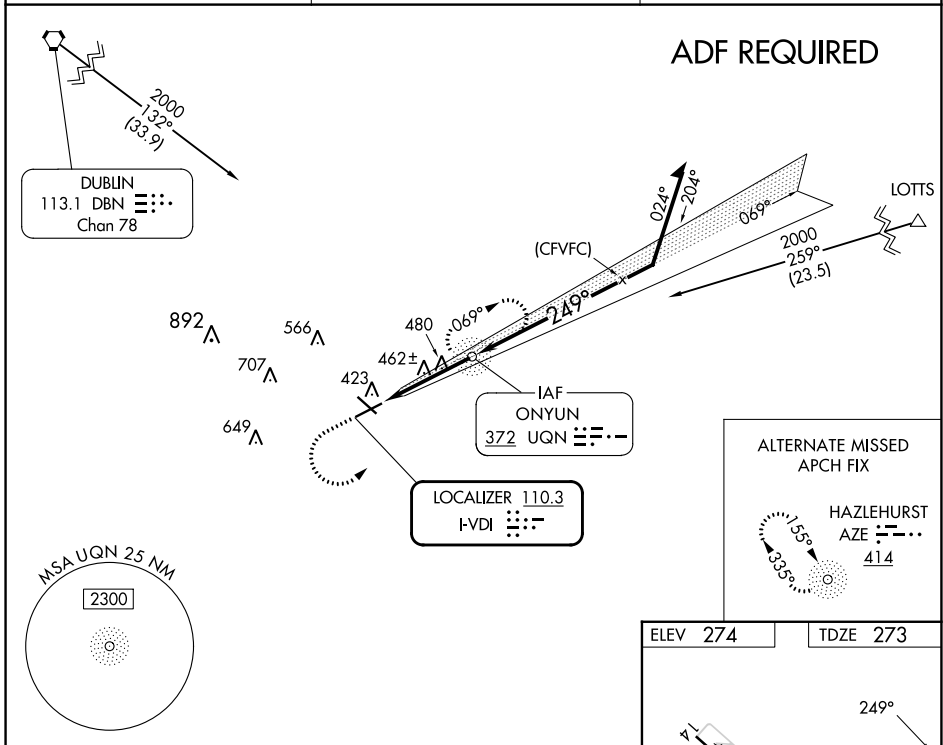
# ILS or LOC RWY 25

VIDALIA RGNL (VDI)

**NA** When local altimeter setting not received, use Baxley altimeter setting and increase all DAs 77 feet and all MDAs 80 feet, increase S-LOC 25 Cat C/D visibility 1/8 mile, Circling Cat C/D visibility 1/4 mile. For inop MALSRL, increase S-LOC 25 Cat C/D visibility to 1 3/8 mile. For inop MALSRL, when using Baxley altimeter setting increase S-ILS 25 all Cats visibility to 3/8 mile. Night landing Rwy 32 NA. ADF required.

**MALSRL**  
MISSED APPROACH: Climb to 1100 then climbing left turn to 2000 direct UQN NDB and hold.

AWOS-3 <b>119.925</b>	JACKSONVILLE CENTER <b>127.575 269.025</b>	UNICOM <b>122.8 (CTAF)</b>
--------------------------	---	-------------------------------



ELEV 274	TDZE 273
HIRL Rwy 7-25	
REIL Rwy 7	
FAF to MAP 3.7 NM	
Knots	60 90 120 150 180
Min:Sec	3:42 2:28 1:51 1:29 1:14

CATEGORY	A	B	C	D
S-ILS 25	473-1/2		200 (200-1/2)	
S-LOC 25	740-1/2	467 (500-1/2)	740-1	467 (500-1)
<b>CIRCLING</b>	740-1	466 (500-1)	920-1 3/4 646 (700-1 3/4)	1060-2 1/2 786 (800-2 1/2)

SE-4, 13 JUN 2024 to 11 JUL 2024

SE-4, 13 JUN 2024 to 11 JUL 2024