

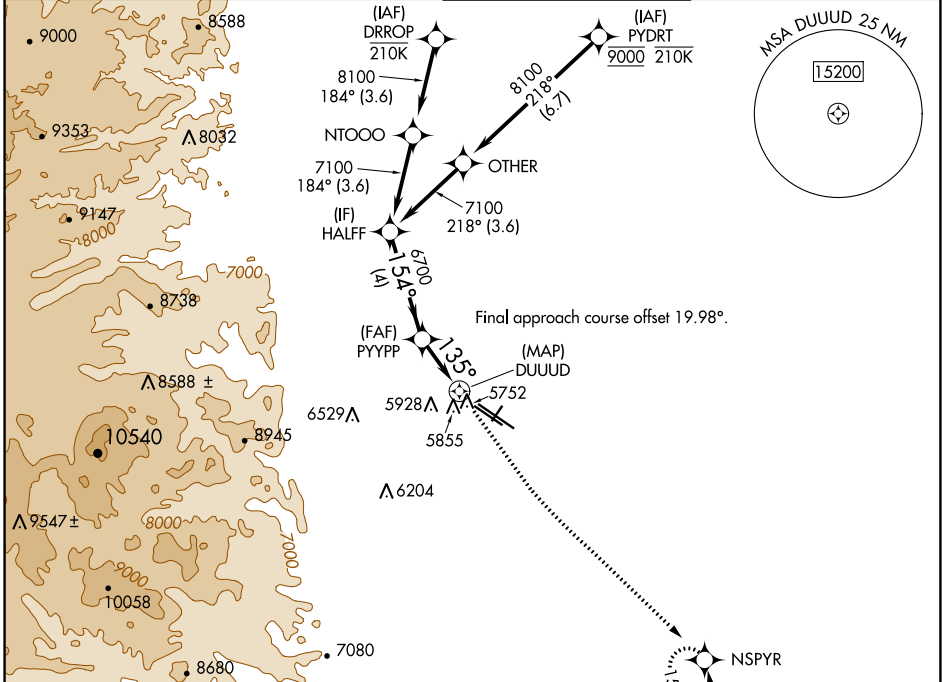
WAAS CH 77938 W12A	APP CRS 135°	Rwy Idg TDZE 5661 Apt Elev 5673
--	------------------------	---

RNAV (GPS) RWY 12L

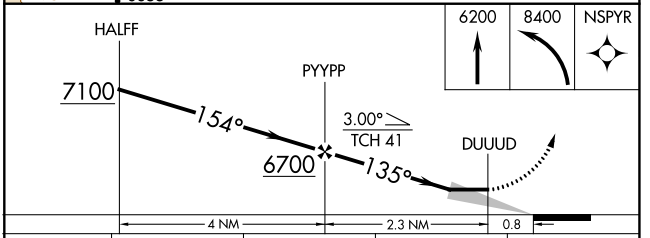
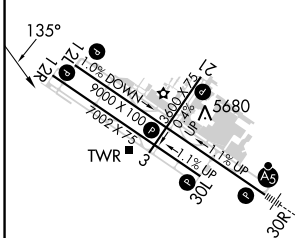
ROCKY MOUNTAIN METRO (B.JC)

RNP APCH.	MISSED APPROACH: Climb to 6200 then climbing left turn to 8400 direct NSPYR and hold.
Circling NA for Cat D southwest of Rwy 12R-30L	

ATIS 126.25	DENVER APP CON 125.12 263.02	METRO TOWER ★ 118.6 (CTAF) 233.7	GND CON 121.7	CLNC DEL 132.6
-----------------------	--	--	-------------------------	--------------------------



ELEV 5673	D	TDZE 5661
-----------	----------	-----------



CATEGORY	A	B	C	D
LP MDA	6020-1 359 (400-1)			
LNAV MDA	6120-1	459 (500-1)	6120-1 3/8	459 (500-1 1/8)
C CIRCLING	6180-1 507 (600-1)	6240-1 567 (600-1)	6360-2 687 (700-2)	6360-2 1/4 687 (700-2 1/4)