

APP CRS <b>166°</b>	Rwy ldg TDZE Apt Elev	<b>N/A</b> <b>N/A</b> <b>113</b>
------------------------	-----------------------------	--

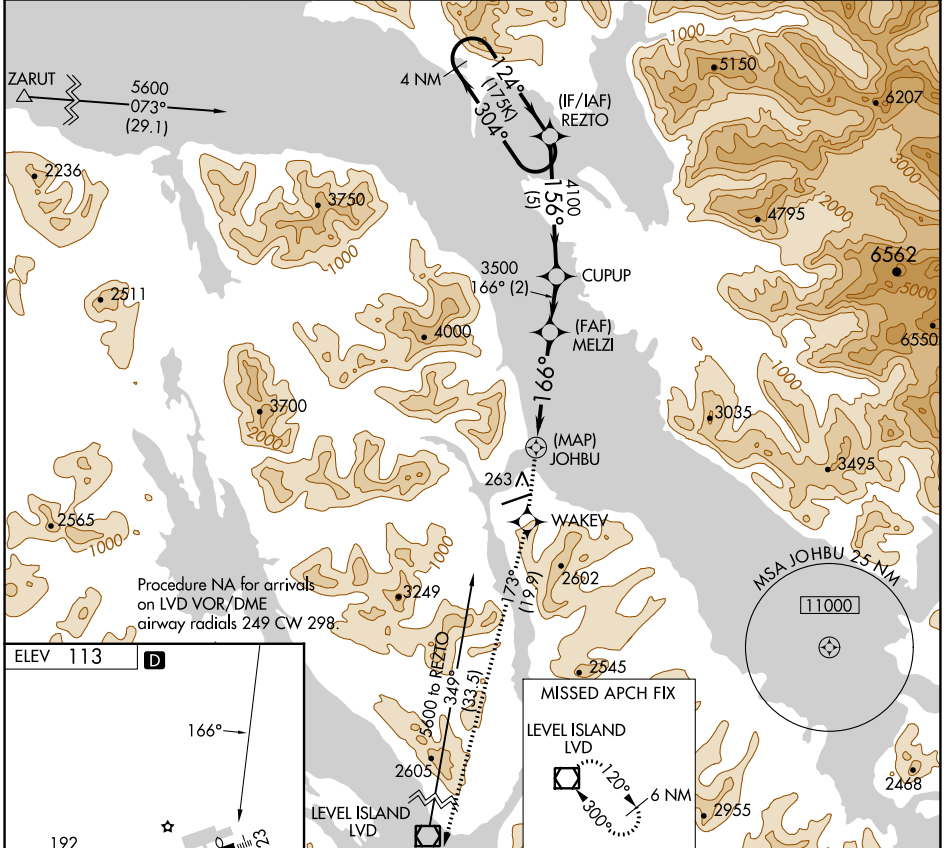
# RNAV (GPS)-B

## PETERSBURG JAMES A JOHNSON (PSG) (PAPG)

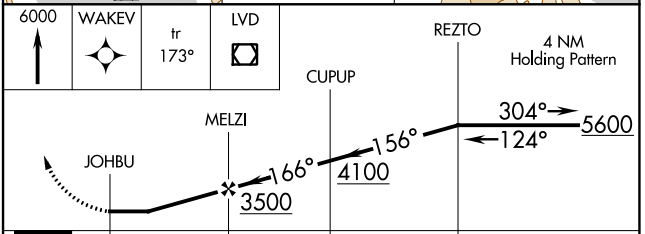
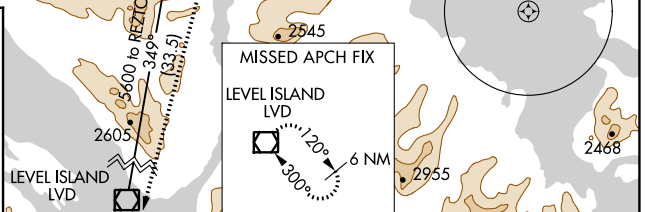
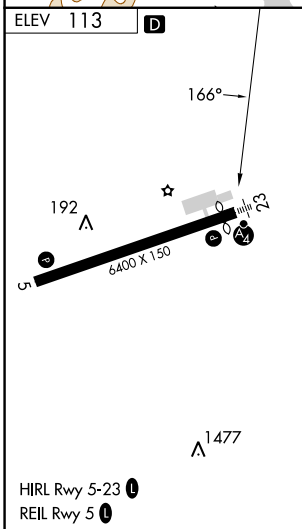
**⚠** When local altimeter setting not received, use Wrangell altimeter setting and increase all MDA 80 feet. Circling **-11°C** NA southeast of Rwy 5-23. DME/DME RNP-0.3 NA.

**MISSED APPROACH:** Climb to 6000 direct WAKEV and on track 173° to LVD VOR/DME and hold, continue climb-in-hold to 6000.

AWOS-3P <b>125.8</b>	ANCHORAGE CENTER <b>118.0</b>	SITKA RADIO <b>122.35</b>	CTAF <b>122.5</b>
-------------------------	----------------------------------	------------------------------	----------------------



Procedure NA for arrivals on LVD VOR/DME airway radials 249 CW 298.



CATEGORY	A	B	C	D
<b>C</b> CIRCLING	2460-2	2347 (2400-2)	3080-3 2967 (3000-3)	NA

AK, 16 MAY 2024 to 11 JUL 2024

AK, 16 MAY 2024 to 11 JUL 2024