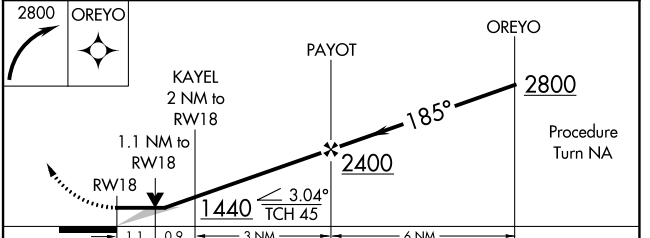
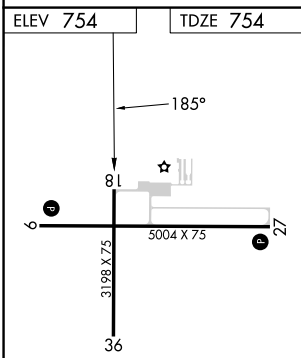
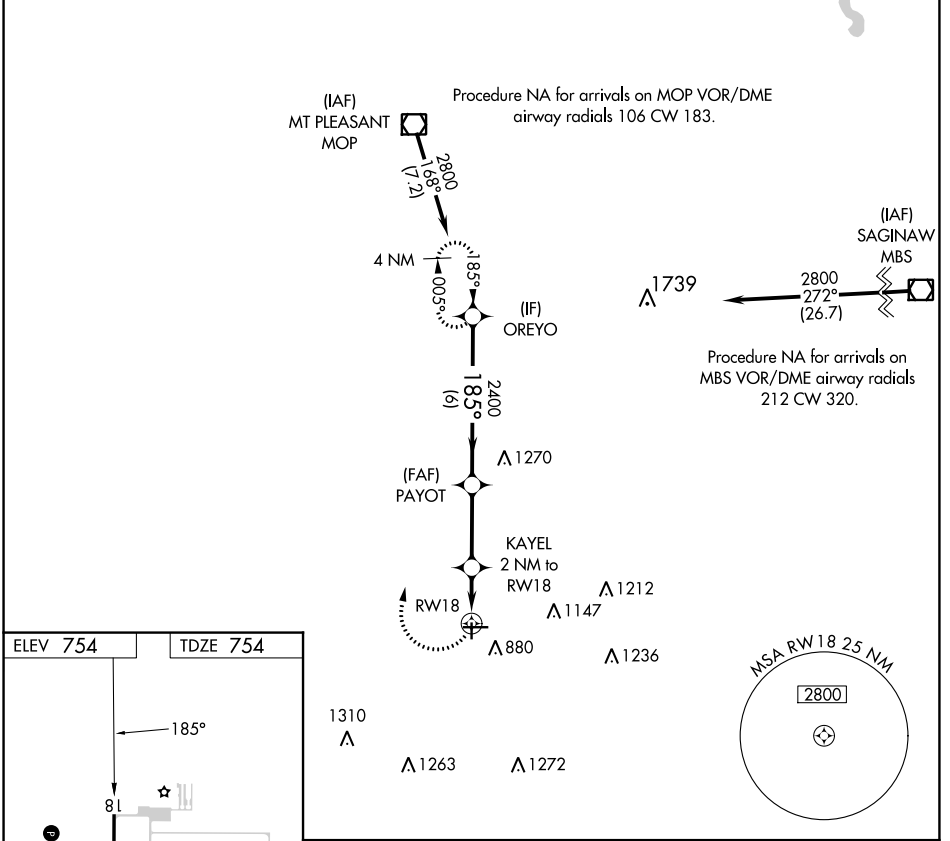


APP CRS <b>185°</b>	Rwy Idg TDZE Apt Elev	<b>3198</b> <b>754</b> <b>754</b>
------------------------	-----------------------------	-----------------------------------------

# RNAV (GPS) RWY 18

GRATIOT COMMUNITY (A.MN)

RNP APCH.		MISSED APPROACH: Climbing right turn to 2800 direct OREYO WP and hold.	
Procedure NA at night.		AWOS-3P <b>124.175</b>	GREAT LAKES APP CON* <b>126.45 235.625</b>
		UNICOM <b>122.8 (CTAF) 0</b>	



REIL Rwy 9 and 27 MIRL Rwy 9-27 and 18-36	<table border="1"> <tr> <th>CATEGORY</th> <td>A</td> <td>B</td> <td>C</td> <td>D</td> </tr> <tr> <th>LNAV MDA</th> <td>1160-1</td> <td>406 (500-1)</td> <td>1160-1¼ 406 (500-1¼)</td> <td>NA</td> </tr> </table>	CATEGORY	A	B	C	D	LNAV MDA	1160-1	406 (500-1)	1160-1¼ 406 (500-1¼)	NA
CATEGORY	A	B	C	D							
LNAV MDA	1160-1	406 (500-1)	1160-1¼ 406 (500-1¼)	NA							

EC-1, 13 JUN 2024 to 11 JUL 2024

EC-1, 13 JUN 2024 to 11 JUL 2024