

LOC I-MJX 109.9	APP CRS 063°	Rwy Idg 5835
		TDZE 81
		Apt Elev 86

ILS or LOC RWY 6

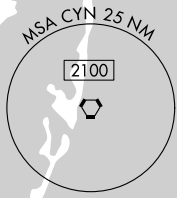
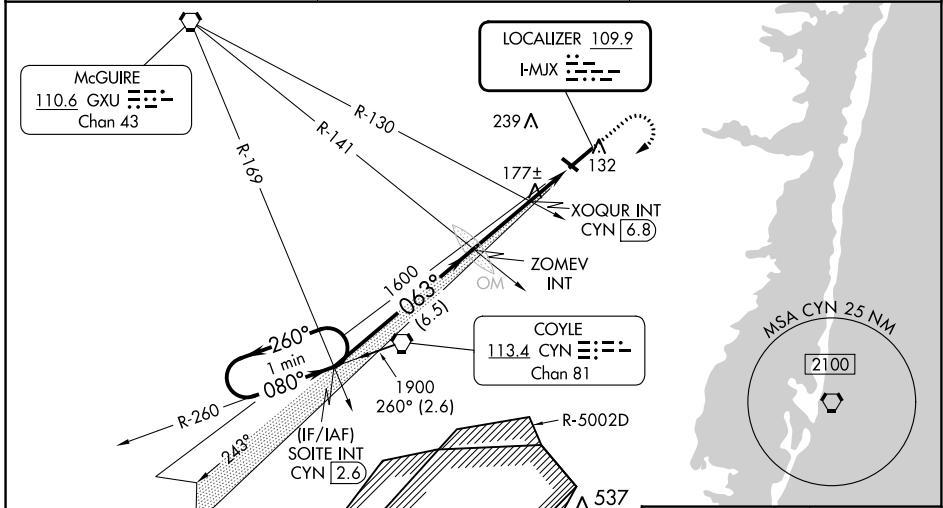
OCEAN COUNTY (MJX)

NA Circling Rwy 14, 32 NA at night. Inop table does not apply to S-ILS 6. For inop ALS, increase S-LOC 6 Cats A/B and S-LOC 6 XOQRX Fix minimums Cats A/B visibility to 1. When local altimeter setting not received, use Mc Guire Fld (Joint Base Mc Guire Dix Lakehurst) altimeter setting and increase all DA 41 feet and all MDA 60 feet; increase S-LOC 6 Cats C/D and Circling Cat C visibility 1/8 mile, Cat D 1/4 mile; increase XOQRX Fix minimums S-LOC 6 Cat C/D visibility 1/8 mile and Circling Cat D 1/4 mile. For inop ALS when using Mc Guire Fld (Joint Base Mc Guire Dix Lakehurst) altimeter setting, increase S-ILS 6 all Cats visibility to 1/2 and S-LOC 6 Cats A/B and S-LOC 6 XOQRX Fix minimums Cats A/B visibility to 1, Cats C/D visibility to 1 1/8. Rwy 6 helicopter visibility reduction below 3/4 SM NA.

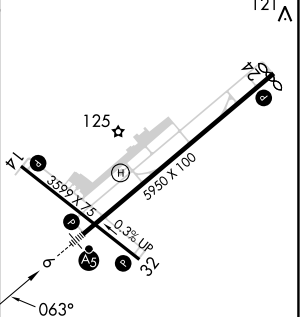
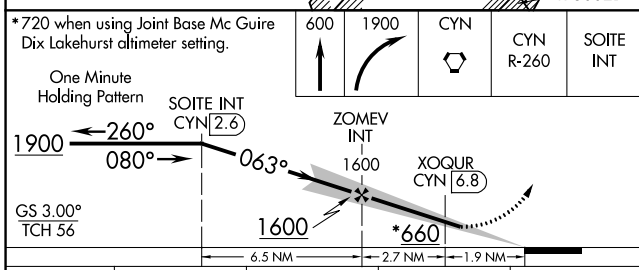
MISSED APPROACH:
Climb to 600 then climbing right turn to 1900 direct CYN VORTAC then on CYN R-260 to SOITE INT/CYN 2.6 DME and hold.



AWOS-3PT 119.875	MC GUIRE APP CON 126.475 363.8	UNICOM 122.7 (CTAF)
----------------------------	--	-------------------------------



ELEV 86	TDZE 81
---------	---------



CATEGORY	A	B	C	D
S-ILS 6		331-3/4	250 (300-3/4)	
S-LOC 6	660-3/4	579 (600-3/4)	660-1/4	579 (600-1/4)
CIRCLING	660-1	574 (600-1)	574 (600-1 3/4)	614 (700-2)
XOQRX FIX MINIMUMS (DUAL VOR RECEIVERS or DME REQUIRED)				
S-LOC 6	520-3/4	439 (500-3/4)	520-7/8	439 (500-7/8)
CIRCLING	540-1	560-1	580-1 1/2	700-2
	454 (500-1)	474 (500-1)	494 (500-1 1/2)	614 (700-2)

MIRL Rwy 14-32	
HIRL Rwy 6-24	
REIL Rws 14, 24 and 32	
FAF to MAP 4.6 NM	
Knots	60 90 120 150 180
Min:Sec	4:36 3:04 2:18 1:50 1:32

NE-2, 13 JUN 2024 to 11 JUL 2024

NE-2, 13 JUN 2024 to 11 JUL 2024