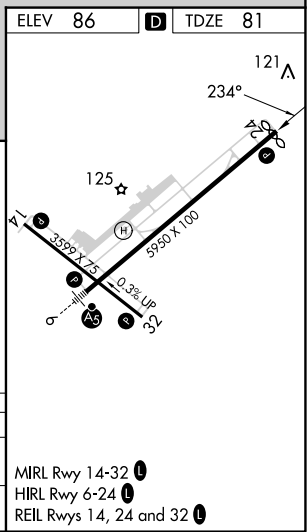
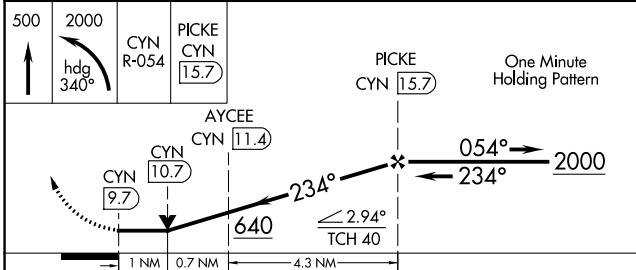
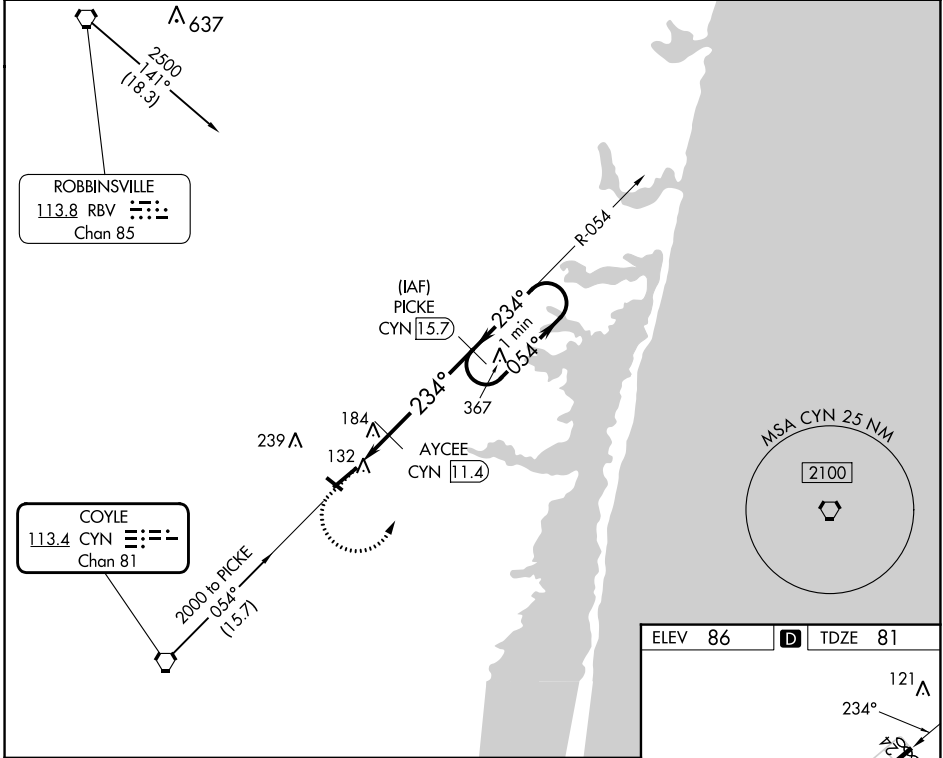


VORTAC CYN 113.4 Chan 81	APP CRS 234°	Rwy Idg TDZE 81 Apt Elev 86	5835
--	------------------------	--	-------------

VOR RWY 24

OCEAN COUNTY (MJX)

DME required for procedure entry. DME required.		MISSED APPROACH: Climb to 500 then climbing left turn to 2000 on heading 340° and on CYN VORTAC R-054 to PICKE/CYN 15.7 DME and hold.
Rwy 24 helicopter visibility reduction below 3/4 SM NA. Circling Rwy 14, 32 NA at night.		
AWOS-3PT 119.875	MC GUIRE APP CON 126.475 363.8	UNICOM 122.7 (CTAF) 0



CATEGORY	A	B	C	D
S-24		440-1	359 (400-1)	
CIRCLING	540-1 454 (500-1)	560-1 474 (500-1)	580-1½ 494 (500-1½)	700-2 614 (700-2)

NE-2, 13 JUN 2024 to 11 JUL 2024

NE-2, 13 JUN 2024 to 11 JUL 2024