

VORTAC CYN 113.4 Chan 81	APP CRS 054°	Rwy Idg 5835 TDZE 81 Apt Elev 86
--	------------------------	---

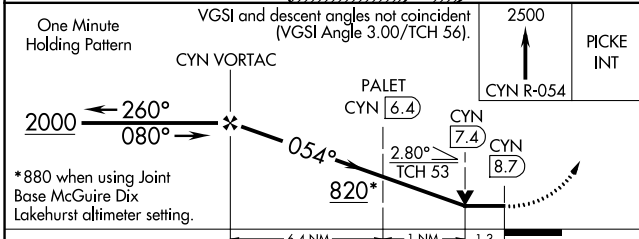
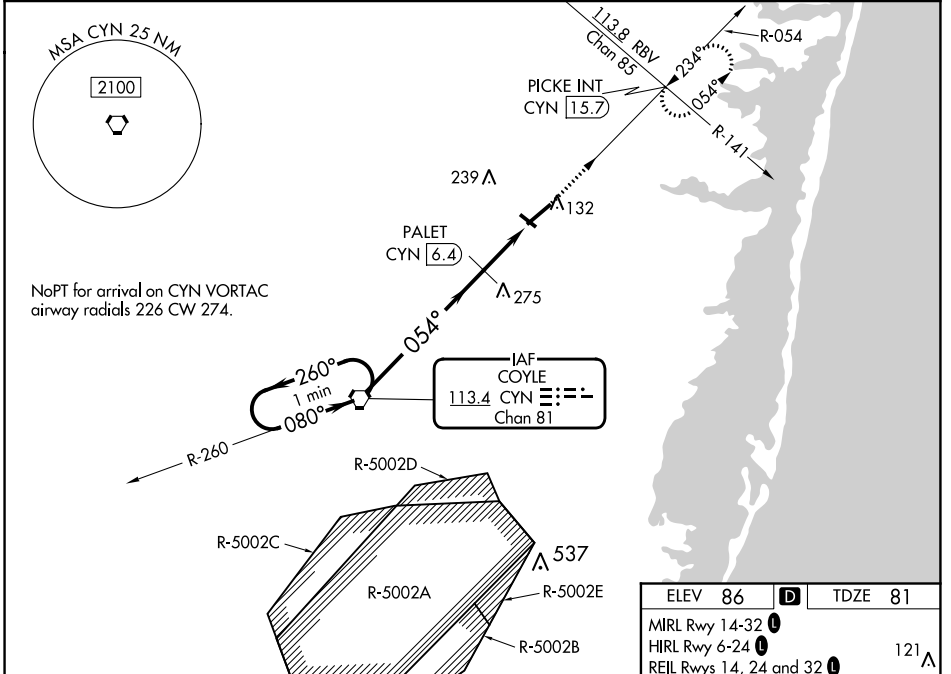
VOR RWY 6

OCEAN COUNTY (MJX)

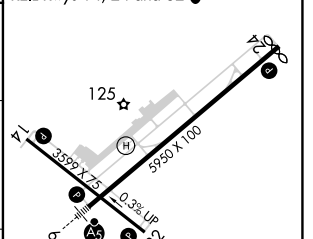
NA Circling Rwy 14, 32 NA at night. For inop ALS, increase S-6 Cat A visibility to 1, S-6 Cats C/D visibility to 2, and PALET Fix Minimums S-6 Cats A/B visibility to 1. When local altimeter setting not received, use Mc Guire Fld (Joint Base Mc Guire Dix Lakehurst) altimeter setting and increase all MDA 60 feet; increase S-6 Cats C/D visibility 1/8 mile, Circling Cat C visibility 1/2 mile, and Circling Cat D visibility 1/4 mile; increase PALET Fix Minimums Circling Cat D visibility 1/4 mile. For inop ALS when using Mc Guire Fld (Joint Base Mc Guire Dix Lakehurst) altimeter setting, increase S-6 Cat A visibility to 1, Cats C/D visibility to 2 1/2, and PALET Fix Minimums Cats A/B visibility to 1. Rwy 6 helicopter visibility reduction below 3/4 SM NA. VDP NA when using Mc Guire Fld (Joint Base Mc Guire Dix Lakehurst) altimeter setting.

MALSR MISSED APPROACH: Climb to 2500 on CYN R-054 to PICKE INT/CYN 15.7 DME and hold.

AWOS-3PT 119.875	MC GUIRE APP CON 126.475 363.8	UNICOM 122.7 (CTAF)
----------------------------	--	-------------------------------



ELEV 86	TDZE 81
MRL Rwy 14-32 121	
HIRL Rwy 6-24 121	
REIL Rwys 14, 24 and 32 121	



CATEGORY	A	B	C	D
S-6	820-3/4	739 (800-3/4)	820-1 3/4	739 (800-1 3/4)
C CIRCLING	820-1	820-1 1/4	820-2	820-2 1/4
	734 (800-1)	734 (800-1 1/4)	734 (800-2)	734 (800-2 1/4)
PALET FIX MINIMUMS				
S-6	540-3/4	459 (500-3/4)	540-1	459 (500-1)
C CIRCLING	540-1	560-1	580-1 1/2	700-2
	454 (500-1)	474 (500-1)	494 (500-1 1/2)	614 (700-2)

FAF to MAP 8.7 NM					
Knots	60	90	120	150	180
Min:Sec	8:42	5:48	4:21	3:29	2:54

NE-2, 13 JUN 2024 to 11 JUL 2024

NE-2, 13 JUN 2024 to 11 JUL 2024