

WAAS CH <b>62823</b> <b>W21A</b>	APP CRS <b>206°</b>	Rwy Idg <b>5502</b>
		TDZE <b>315</b>
		Apt Elev <b>315</b>

# RNAV (GPS) RWY 21

SIKESTON MEML MUNI (SIK)

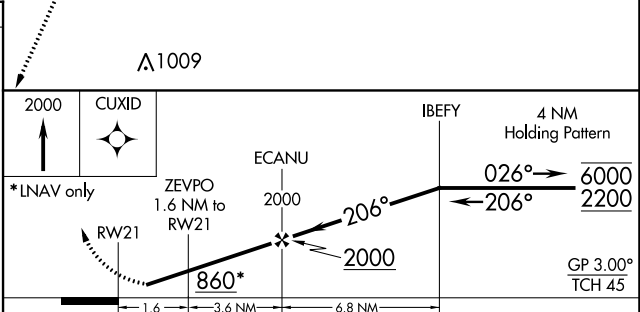
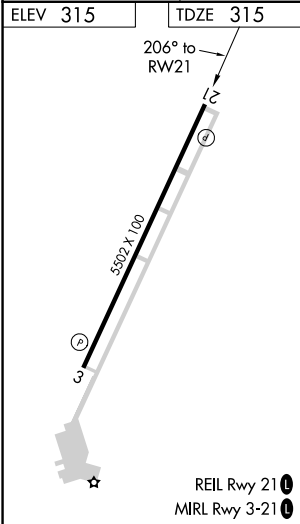
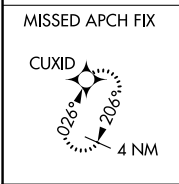
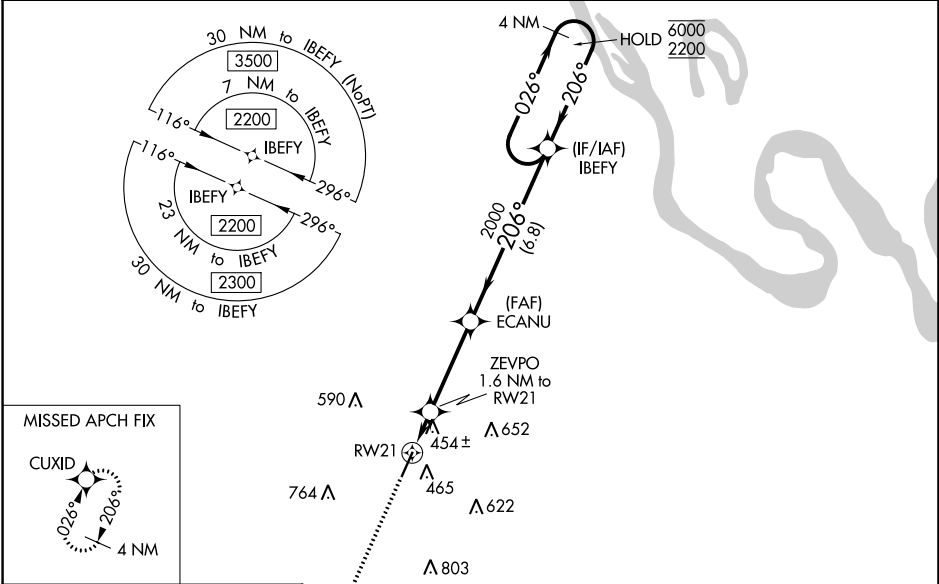
RNP APCH.

**▽** Rwy 21 helicopter visibility reduction below ¼ SM NA. Baro-VNAV NA when using Cape Girardeau altimeter setting. For uncompensated Baro-VNAV systems, LNAV/VNAV NA below -15°C or above 54°C. When local altimeter setting not received, use Cape Girardeau altimeter setting and increase all DA 49 feet and all MDA 60 feet. Increase LNAV and Circling Cat C/D visibility ¼ SM.

**△NA**

MISSED APPROACH: Climb to 2000 direct CUXID and hold.

AWOS-3 <b>119.175</b>	MEMPHIS CENTER <b>133.65 292.15</b>	UNICOM <b>122.8 (CTAF) 0</b>
--------------------------	--	---------------------------------



CATEGORY	A	B	C	D
LPV DA	565-1 250 (300-1)			
LNAV/VNAV DA	761-1⅓ 446 (500-1⅓)			
LNAV MDA	720-1 405 (500-1)		720-1½ 405 (500-1½)	
<input checked="" type="checkbox"/> CIRCLING	840-1 525 (600-1)	860-1 545 (600-1)	1080-2¼ 765 (800-2¼)	1160-2¾ 845 (900-2¾)

NC-3, 13 JUN 2024 to 11 JUL 2024

NC-3, 13 JUN 2024 to 11 JUL 2024