

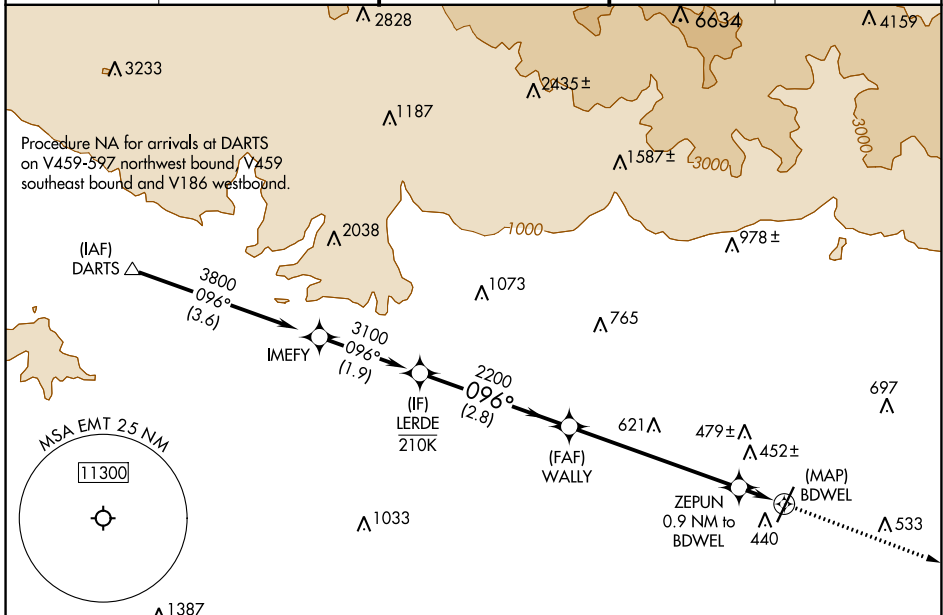
APP CRS	Rwy Idg	N/A
<b>096°</b>	TDZE	N/A
	Apt Elev	<b>296</b>

# RNAV (GPS)-B

SAN GABRIEL VALLEY (EMT)

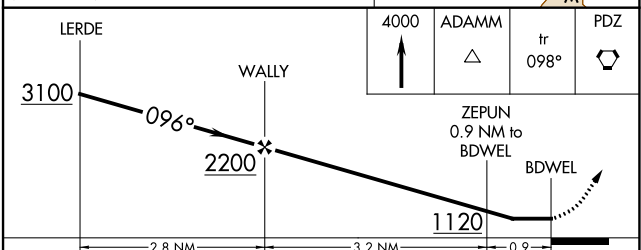
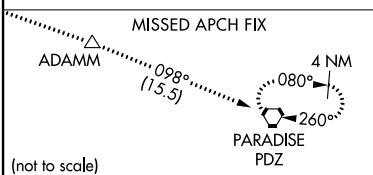
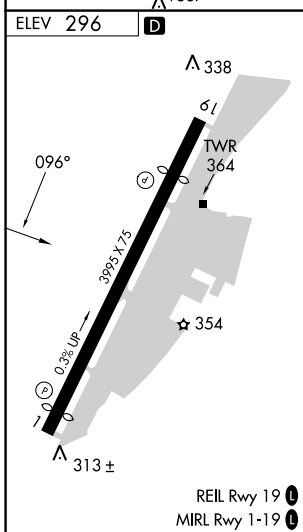
RNP APCH-GPS.		MISSED APPROACH: Climb to 4000 direct ADAMM and on track 098° to PDZ VORTAC and hold.		
<p><b>▽</b> Circling Rwy 1 NA at night. Rwy 1, 19 helicopter visibility reduction below 1 SM NA.</p>				

ATIS <b>118.75</b>	SOCAL APP CON <b>125.5 349.0</b>	EL MONTE TOWER * <b>121.2 (CTAF)</b> <b>0</b>	GND CON <b>125.9</b>	UNICOM <b>122.95</b>
-----------------------	-------------------------------------	--	-------------------------	-------------------------



SW-3, 13 JUN 2024 to 11 JUL 2024

SW-3, 13 JUN 2024 to 11 JUL 2024



CATEGORY	A	B	C	D
<b>CIRCLING</b>	820-1 524 (600-1)	960-1 664 (700-1)	1140-2½ 844 (900-2½)	1300-3 1004 (1100-3)