

VORTAC POM <b>110.4</b> Chan 41	APP CRS <b>258°</b>	Rwy Idg TDZE N/A	N/A
		Apt Elev	296

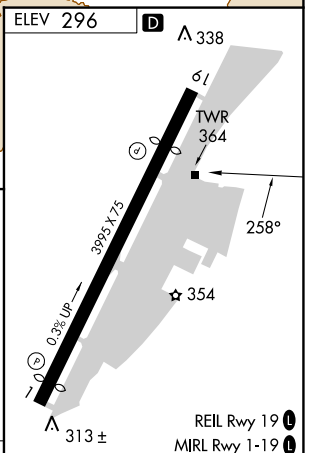
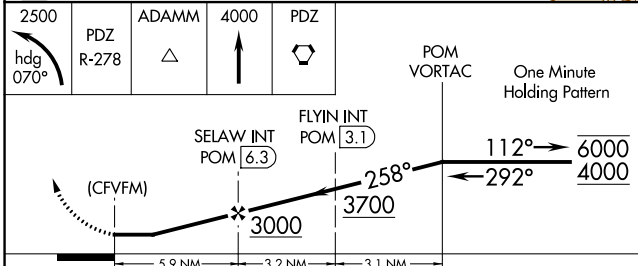
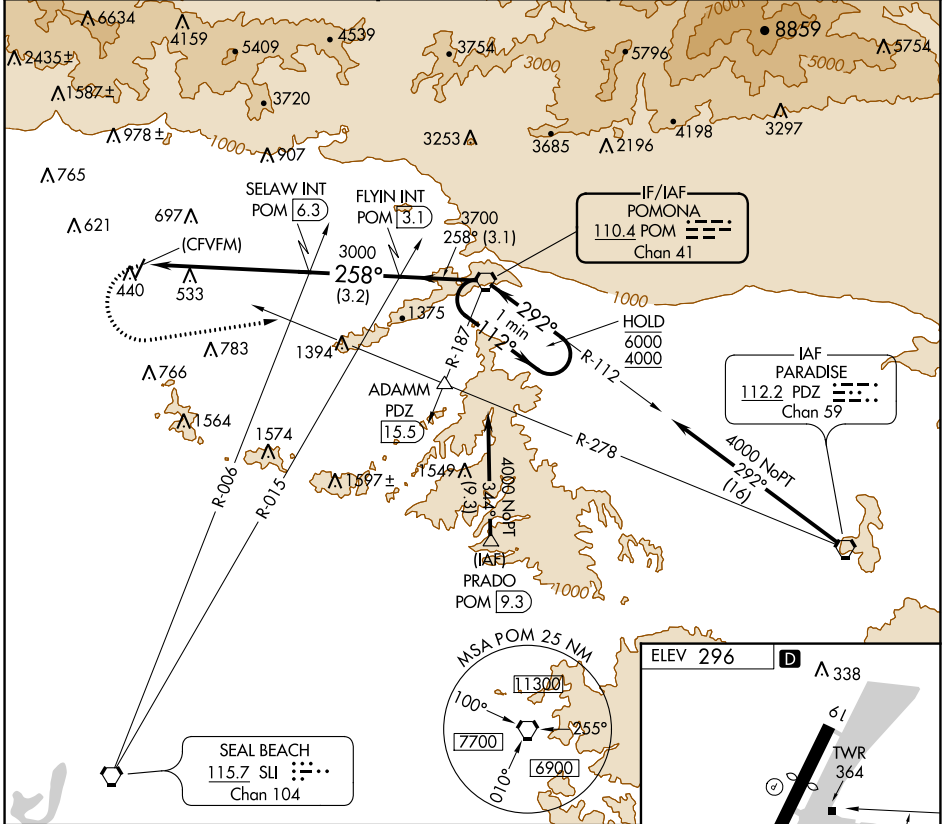
# VOR-A

## SAN GABRIEL VALLEY (EMT)

**⚠** Circling Rwy 1 NA at night. When local altimeter setting not received, use Ontario Int'l altimeter setting and increase all MDA 160 feet.

**⚠** MISSED APPROACH: Climbing left turn to 2500 on heading 070° and PDZ VORTAC R-278 to ADAMM INT/PDZ 15.5 DME then continue climb to 4000 to PDZ VORTAC.

ATIS <b>118.75</b>	SOCAL APP CON <b>125.5 349.0</b>	EL MONTE TOWER * <b>121.2 (CTAF) 0</b>	GND CON <b>125.9</b>	UNICOM <b>122.95</b>
-----------------------	-------------------------------------	---	-------------------------	-------------------------



CATEGORY	FAF to MAP 5.9 NM			FAF to MAP 5.9 NM						
	A	B	C	D	Knots	60	90	120	150	180
<b>C</b> CIRCLING	1280-1¼ 984 (1000-1¼)	1280-1½ 984 (1000-1½)	1280-3 984 (1000-3)	1320-3 1024 (1100-3)	Min:Sec	5:54	3:56	2:57	2:22	1:58

SW-3, 13 JUN 2024 to 11 JUL 2024

SW-3, 13 JUN 2024 to 11 JUL 2024