

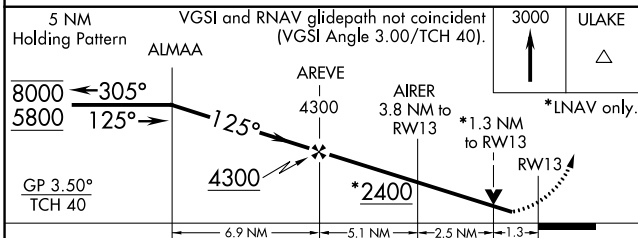
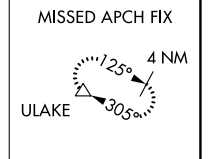
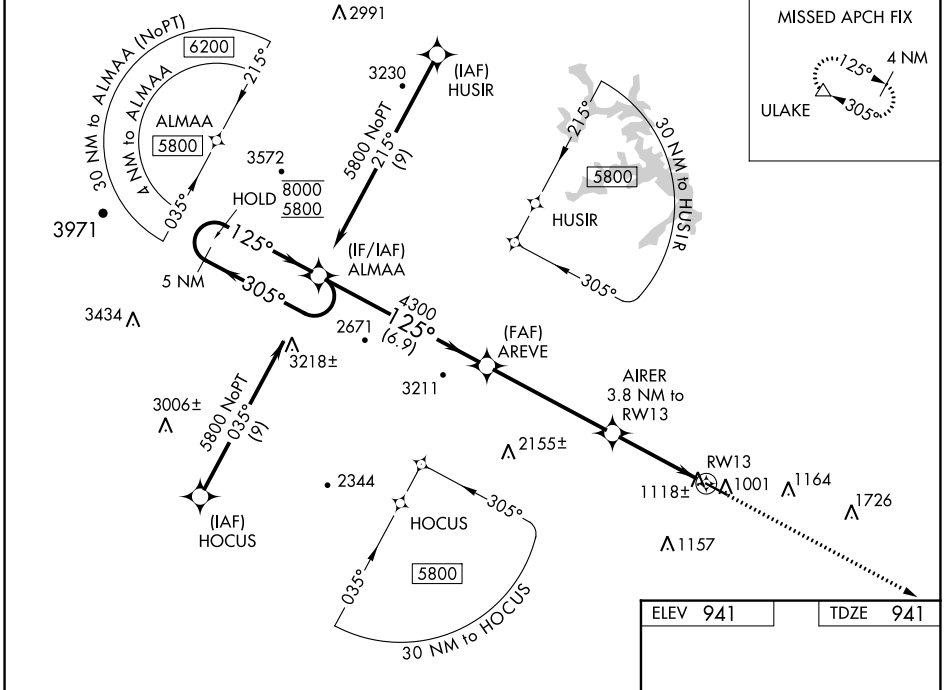
WAAS CH 50218 W13A	APP CRS 125°	Rwy Idg TDZE Apt Elev	5002 941 941
--	------------------------	-----------------------------	---

RNAV (GPS) RWY 13

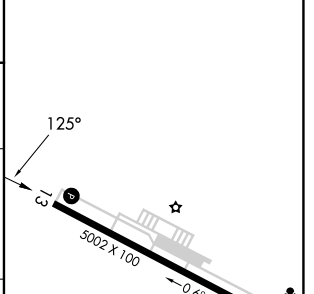
BLUE RIDGE (MTV)

RNP APCH-GPS.	MISSED APPROACH: Climb to 3000 direct ULAKE and hold.
<p>▼ Rwy 13 helicopter visibility reduction below ¾ SM NA. For uncompensated Baro-VNAV systems, LNAV/VNAV NA below -1.6°C or above 46°C.</p> <p>⚠ -17°C</p>	

AWOS-3 118.45	GREENSBORO APP CON 124.35 269.225	CINC DEL 124.85	UNICOM 122.7 (CTAF) 0
-------------------------	---	---------------------------	---------------------------------



ELEV 941	TDZE 941
----------	----------



CATEGORY	A	B	C	D
LPV DA		1301-1	360 (400-1)	
LNAV/ VNAV DA		1324-1½	383 (400-1½)	
LNAV MDA	1380-1	439 (500-1)	1380-1¼	439 (500-1¼)
CIRCLING	1420-1 479 (500-1)	1440-1 499 (500-1)	1540-1½ 599 (600-1½)	1800-2¾ 859 (900-2¾)

MIRL Rwy 13-31 0
REIL Rwy 13 and 31 0

NE-3, 13 JUN 2024 to 11 JUL 2024

NE-3, 13 JUN 2024 to 11 JUL 2024