

| | | | |
|--|------------------------|-----------------------------|---|
| WAAS CH 86216 W17A | APP CRS 175° | Rwy Idg TDZE Apt Elev | 5501 1433 1433 |
|--|------------------------|-----------------------------|---|

RNAV (GPS) RWY 17

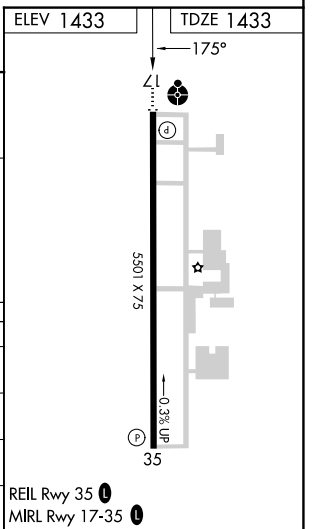
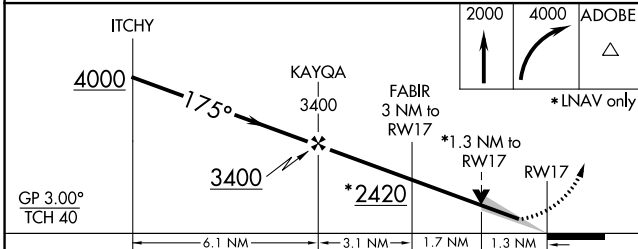
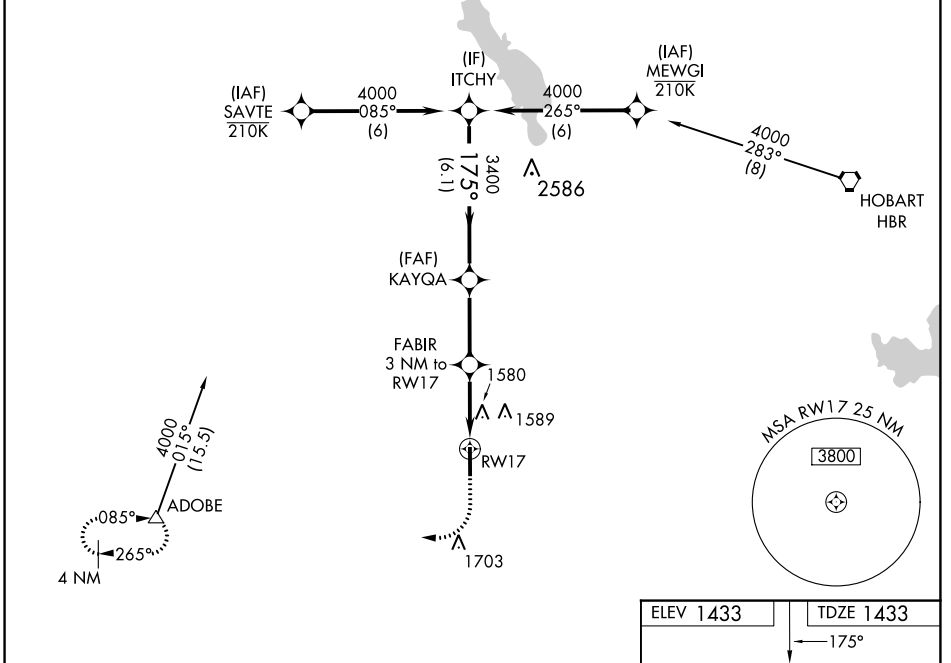
ALTUS/QUARTZ MOUNTAIN RGNL (A.X.S)

⚠ For uncompensated Baro-VNAV systems, LNAV/VNAV NA below -17°C (2°F) or above 54°C (130°F). Baro-VNAV and VDP NA when using Hobart Rgnl altimeter setting. DME/DME RNP-0.3 NA. When local altimeter setting not received, use Hobart Rgnl altimeter setting and increase LPV DA to 1754 feet and LNAV/VNAV DA to 1997 feet and increase all MDA 80 feet. Increase LPV, LNAV/VNAV all Cats and Circling Cat C visibility ¼ mile, increase LNAV Cat C visibility ½ mile.

ODALS

MISSED APPROACH: Climb to 2000 then climbing right turn to 4000 direct ADOBE and hold.

| | | |
|----------------------------|--------------------------------------|---------------------------------|
| AWOS-3PT 118.825 | ALTUS APP CON* 125.1 353.7 | UNICOM 122.8 (CTAF) 0 |
|----------------------------|--------------------------------------|---------------------------------|



| CATEGORY | A | B | C | D |
|-------------------|------------|-----------------|-------------------------------|----|
| LPV DA | 1683-7/8 | 250 (300-7/8) | | NA |
| LNAV/VNAV DA | 1926-1 3/4 | 493 (500-1 3/4) | | NA |
| LNAV MDA | 1880-1 | 447 (500-1) | 1880-1 3/8 447 (500-1 3/8) | NA |
| C CIRCLING | 1920-1 | 487 (500-1) | 2020-1 1/2 587 (600-1 1/2) | NA |

SC-1, 13 JUN 2024 to 11 JUL 2024

SC-1, 13 JUN 2024 to 11 JUL 2024