

VOR/DME BSV 114.05 Chan 87 (Y)	APP CRS 115°	Rwy Idg 5189 TDZE 1113 Apt Elev 1136
----------------------------------------------------	------------------------	-----------------------------------------------------------------

VOR RWY 10

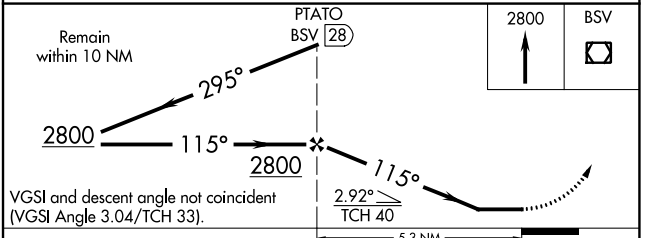
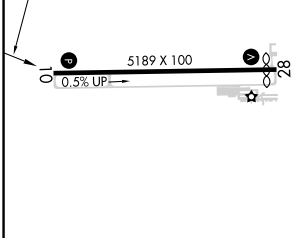
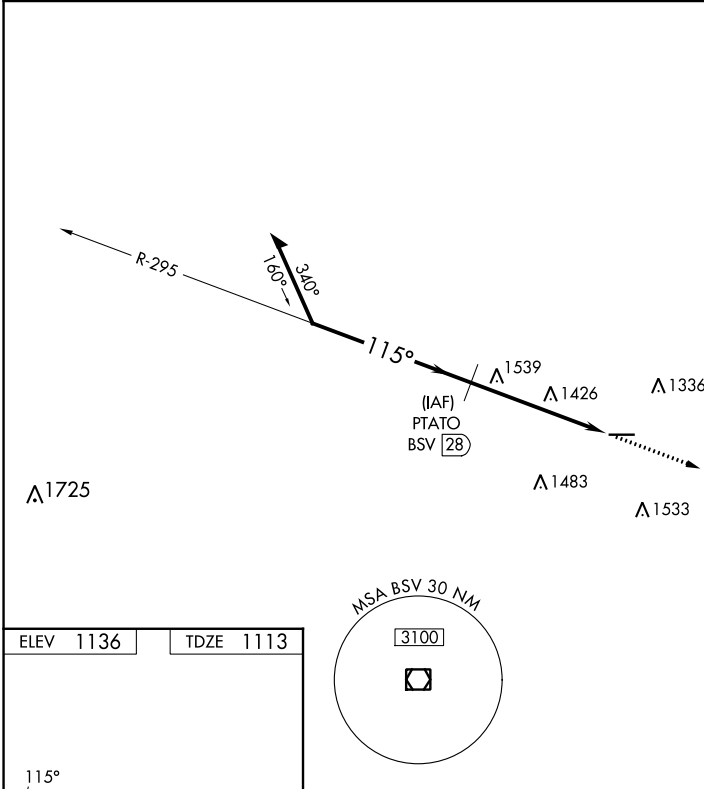
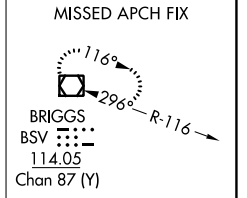
WAYNE COUNTY (BJJ)

DME required.

▼ When local altimeter setting not received, use Akron-Canton Rgnl altimeter setting and increase all MDA 60 feet; increase S-10 Cat C/D and Circling Cat C/D visibility ¼ SM. Rwy 10 helicopter visibility reduction below ¾ SM NA.

▲ MISSED APPROACH: Climb to 2800 direct BSV VOR/DME and hold.

ASOS 118.075	CLEVELAND APP CON ★ 125.5 371.875	CLNC DEL 121.75	UNICOM 122.975 (CTAF) 1
------------------------	---------------------------------------------	---------------------------	------------------------------------------



REIL Rwy 10 and 28 **1**
HIRL Rwy 10-28 **1**

FAF to MAP 5.3 NM

Knots	60	90	120	150	180
Min:Sec	5:18	3:32	2:39	2:07	1:46

CATEGORY	A	B	C	D
S-10	1840-1 727 (800-1)	1840-1¼ 727 (800-1¼)	1840-2 727 (800-2)	1840-2¼ 727 (800-2¼)
CIRCLING	1840-1 704 (800-1)	1840-1¼ 704 (800-1¼)	1840-2 704 (800-2)	1840-2¼ 704 (800-2¼)

EC-2, 13 JUN 2024 to 11 JUL 2024

EC-2, 13 JUN 2024 to 11 JUL 2024