

VOR/DME BSV 114.05 Chan 87(Y)	APP CRS 296°	Rwy Idg 4971 TDZE 1134 Apt Elev 1136
---	------------------------	---

VOR RWY 28

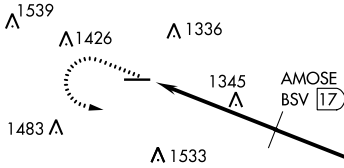
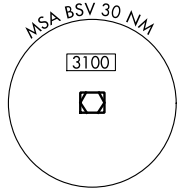
WAYNE COUNTY (BJJ)

⚠ DME required. Helicopter visibility reduction below 3/4 SM NA.
⚠ When local altimeter setting not received, use Akron-Canton Rgnl altimeter setting and increase all MDA 60 feet and visibility Circling Cat C/D 1/4 SM.

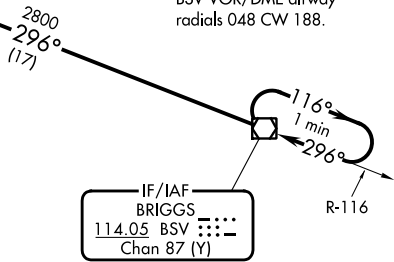
MISSED APPROACH: Climb to 2800 then left turn direct BSV VOR/DME and hold.

ASOS 118.075	CLEVELAND APP CON * 125.5 371.875	CLNC DEL 121.75	UNICOM 122.975 (CTAF) 1
------------------------	---	---------------------------	-----------------------------------

DME REQUIRED



NoPT for arrival on BSV VOR/DME airway radials 048 CW 188.

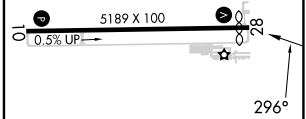
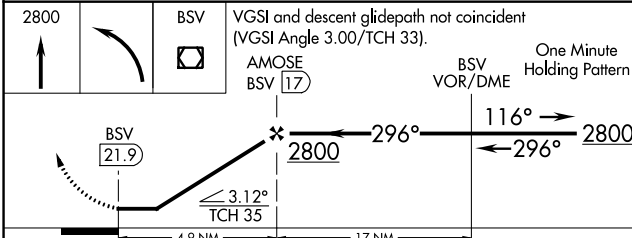


EC-2, 13 JUN 2024 to 11 JUL 2024

EC-2, 13 JUN 2024 to 11 JUL 2024

IF/IAF
BRIGGS
114.05 BSV Chan 87 (Y)

ELEV 1136	TDZE 1134
-----------	-----------



CATEGORY	A	B	C	D
S-28	1660-1 526 (600-1)	1660-1 1/4 526 (600-1 1/4)	1660-1 1/2 526 (600-1 1/2)	1660-1 3/4 526 (600-1 3/4)
CIRCLING	1660-1 524 (600-1)	1700-1 1/4 564 (600-1 1/4)	1800-1 3/4 664 (700-1 3/4)	1840-2 1/4 704 (800-2 1/4)

REIL Rwy 10 and 28 1
HIRL Rwy 10-28 1

FAF to MAP 4.9 NM

Knots	60	90	120	150	180
Min:Sec	4:54	3:16	2:27	1:58	1:38