

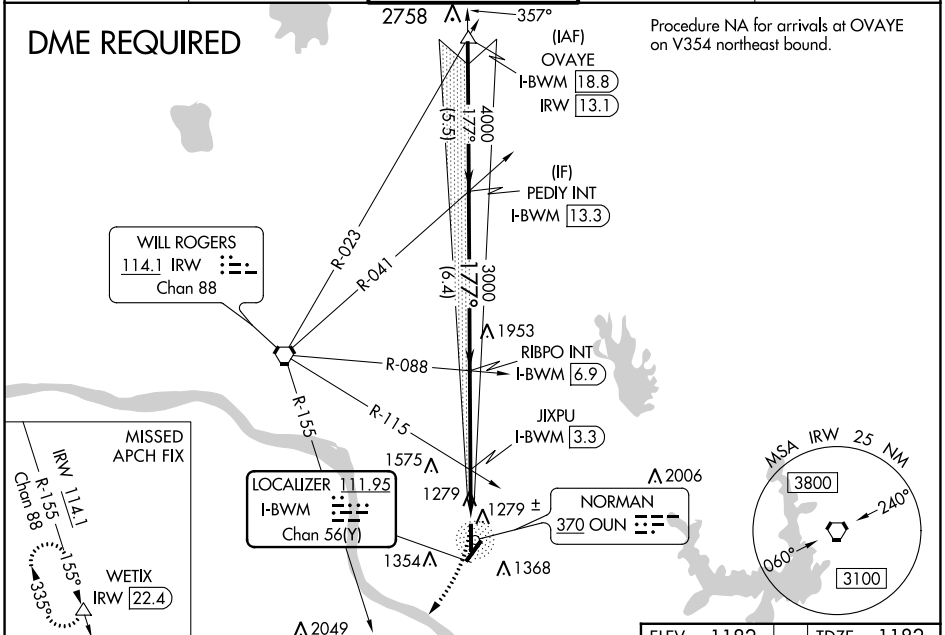
LOC/DME I-BWMM <b>111.95</b> Chan <b>56(Y)</b>	APP CRS <b>177°</b>	Rwy Idg <b>5199</b> TDZE <b>1182</b> Apt Elev <b>1182</b>
--	------------------------	---

# ILS or LOC RWY 18

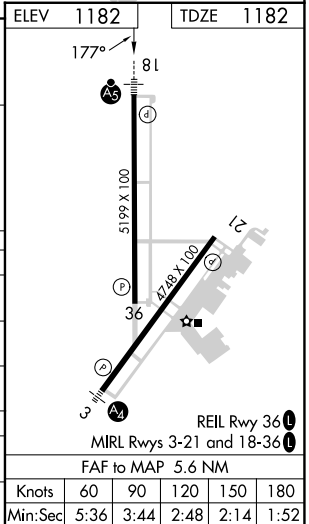
UNIVERSITY OF OKLAHOMA WESTHEIMER (OUN)

<p><b>⚠</b> Circling NA southeast of Rwy 3-21. DME Required. VDP NA with Will Rogers altimeter setting. When local altimeter setting not received, use Will Rogers World altimeter setting and increase all DA 41 feet; increase all MDA 60 feet. Increase visibility S-LOC 18 and JIXPU Fix Minimums Cats C/D 1/2 mile, increase Circling Cats C/D 1/4 mile.</p>	<p>MALSR <b>A5</b></p>	<p>MISSED APPROACH: Climbing right turn to 3100 on heading 185° and IRW VORTAC R-155 to WETIX/IRW VORTAC 22.4 DME and hold.</p>
---	----------------------------	---

AWOS-3PT <b>119.55</b>	OKE CITY APP CON <b>120.45 288.325</b>	WESTHEIMER TOWER ★ <b>118.0 (CTAF)</b>	GND CON <b>121.6</b>	UNICOM <b>122.95</b>
---------------------------	---	---	-------------------------	-------------------------



PEDIY INT I-BWMM 13.3	VGSI and ILS glidepath not coincident (VGSI Angle 3.00/TCH 55).	3100	IRW R-155	WETIX
4000		hdg 185°		
3000				*LOC only.
GS 3.00° TCH 51				
	*1860 when using Will Rogers altimeter setting.			



CATEGORY	A	B	C	D
S-ILS 18		1382-1/2	200 (200-1/2)	
S-LOC 18	1800-1/2	618 (700-1/2)	1800-13/8	618 (700-13/8)
<b>C</b> CIRCLING	1800-1	618 (700-1)	1940-2 1/4 758 (800-2 1/4)	1940-2 1/2 758 (800-2 1/2)
JIXPU FIX MINIMUMS (DUAL VOR RECEIVERS OR DME REQUIRED)				
S-LOC 18	1540-1/2	358 (400-1/2)	1540-5/8	358 (400-5/8)
<b>C</b> CIRCLING	1660-1	478 (500-1)	1940-2 1/4 758 (800-2 1/4)	1940-2 1/2 758 (800-2 1/2)

SC-1, 13 JUN 2024 to 11 JUL 2024

SC-1, 13 JUN 2024 to 11 JUL 2024