

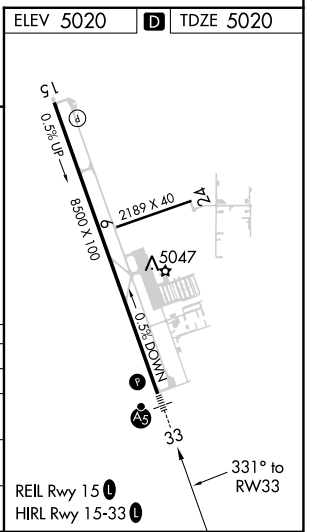
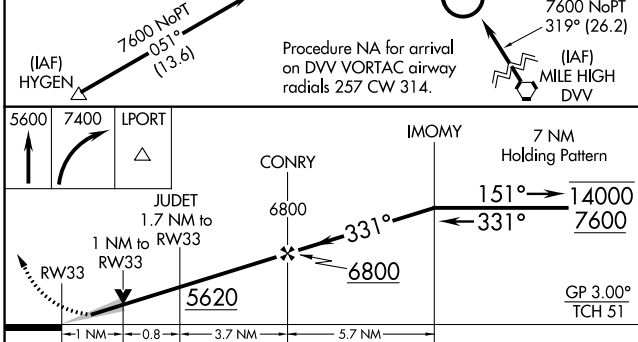
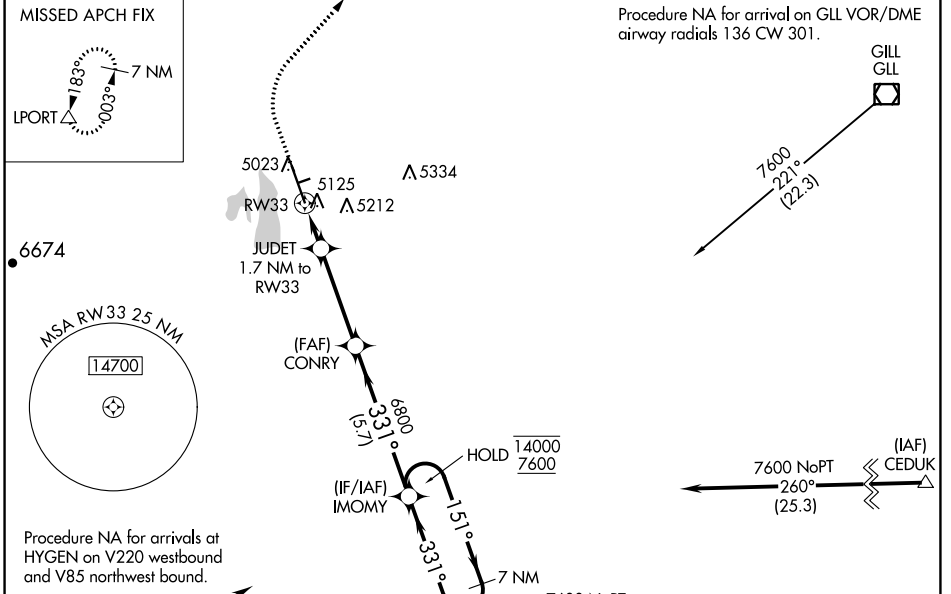
WAAS CH 97511 W33A	APP CRS 331°	Rwy Idg 8500 TDZE 5020 Apt Elev 5020
--	------------------------	---

RNAV (GPS) RWY 33

NORTHERN COLORADO RGNL (FNL)

RNP APCH-GPS.	MALSR 	MISSED APPROACH: Climb to 5600, then climbing right turn to 7400 direct LPORT and hold.
---------------	-----------	---

ATIS 135.075	DENVER APP CON 134.85 251.125	NOCO TOWER* 118.4 (CTAF)	GND CON 121.65	CLNC DEL 120.25 (When twr closed)
------------------------	---	------------------------------------	--------------------------	--



CATEGORY	A	B	C	D
LPV DA		5220-1/2	200 (200-1/2)	
RNAV/VNAV DA		5329-1/2	309 (400-1/2)	
RNAV MDA	5380-1/2	360 (400-1/2)	5380-5/8	360 (400-5/8)
CIRCLING	5480-1 460 (500-1)	5520-1 500 (500-1)	5520-1 1/2 500 (500-1/2)	5700-2 1/4 680 (700-2 1/4)

SW-1, 13 JUN 2024 to 11 JUL 2024

SW-1, 13 JUN 2024 to 11 JUL 2024