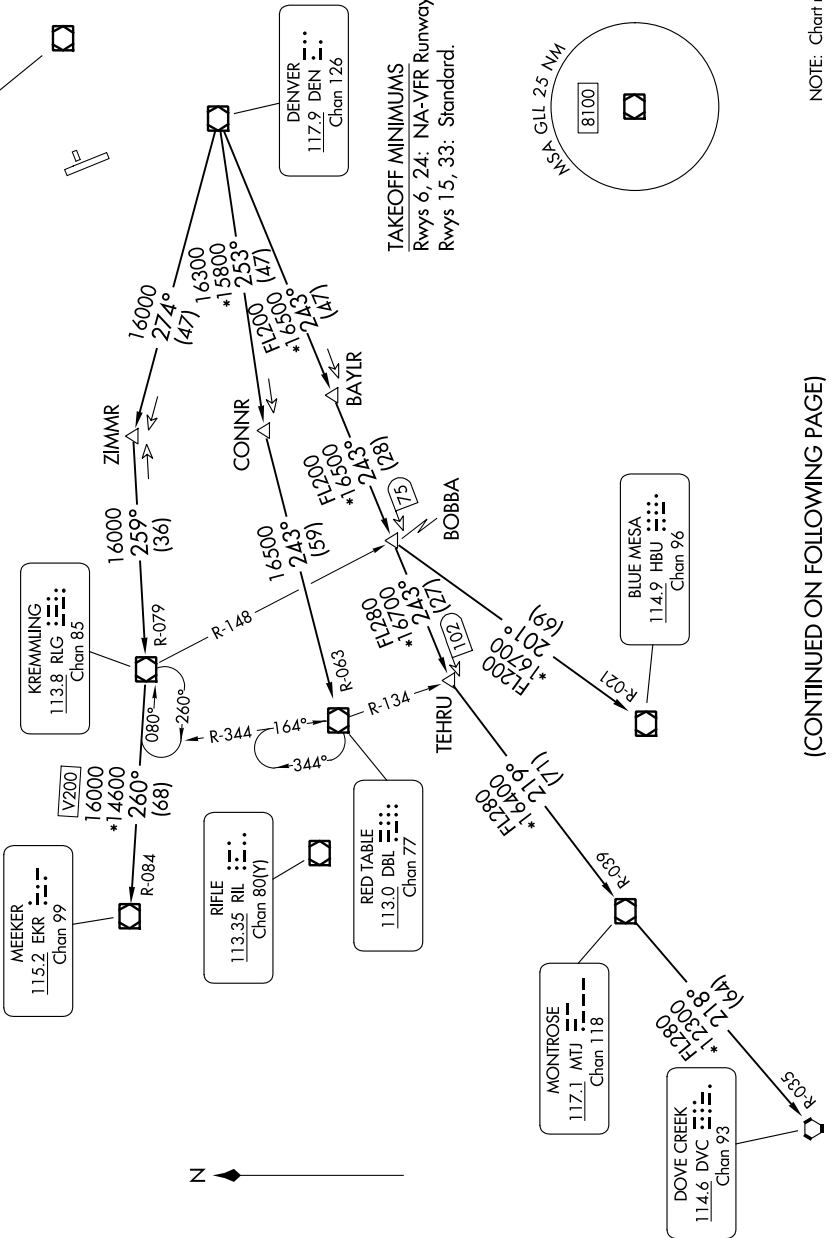


SW-1, 13 JUN 2024 to 11 JUL 2024

TOP ALTITUDE: ASSIGNED BY ATC

RADAR required.

DENVER DEP CON
134.85 251.125
CLNC DEL (when tower closed)
120.25



TAKEOFF MINIMUMS
Rwys 6, 24: NA-VFR Runway.
Rwys 15, 33: Standard.

NOTE: Chart not to scale.

(CONTINUED ON FOLLOWING PAGE)

SW-1, 13 JUN 2024 to 11 JUL 2024