

|  |                        |                             |   |
|--|------------------------|-----------------------------|---|
| WAAS<br>CH <b>42516</b><br><b>W36A</b> | APP CRS<br><b>005°</b> | Rwy Idg<br>TDZE<br>Apt Elev | <b>4756</b><br><b>1197</b><br><b>1197</b> |
|--|------------------------|-----------------------------|---|

# RNAV (GPS) RWY 36

LE MARS MUNI (L.R.J)

RNP APCH - GPS.

**▽** Rwy 36 helicopter visibility reduction below 1 SM NA. For uncompensated Baro-VNAV systems, LNAV/VNAV NA below -24°C

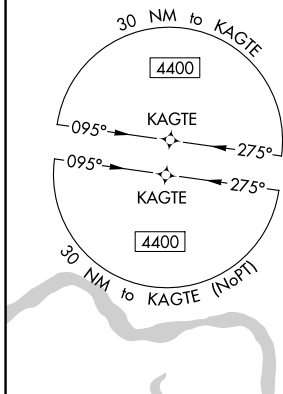
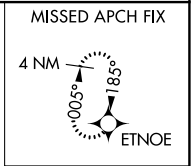
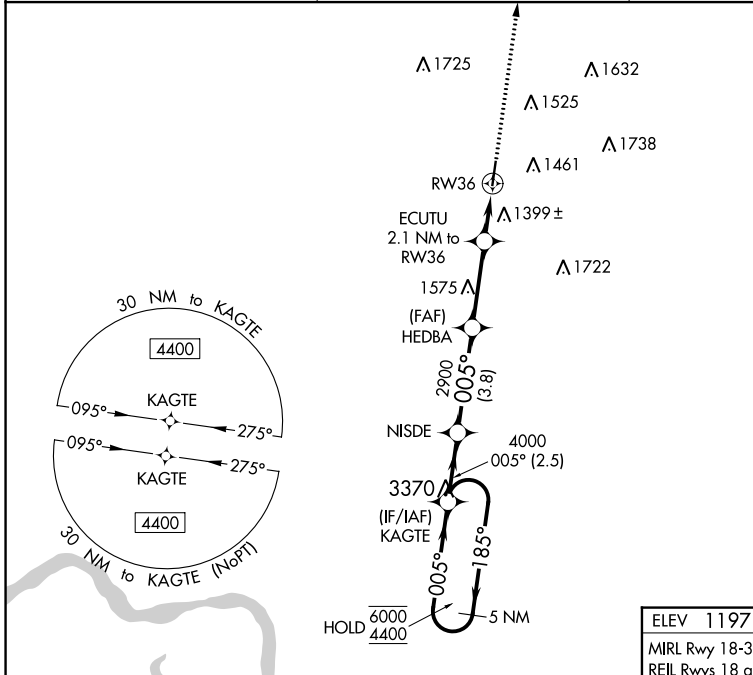
**⚠** -24°C

MISSED APPROACH: Climb to 4000 direct ETNOE and hold.

AWOS-3P  
**120.975**

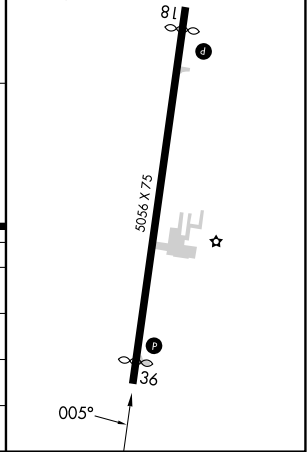
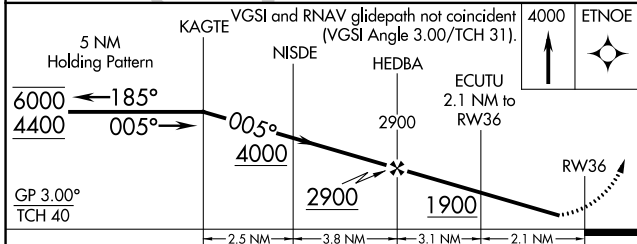
SIOUX CITY APP CON \*  
**124.6 307.0**

UNICOM  
**122.8 (CTAF) 0**



|           |           |
|-----------|-----------|
| ELEV 1197 | TDZE 1197 |
|-----------|-----------|

MIRL Rwy 18-36  
REIL Rwy 18 and 36



| CATEGORY          | A   | B                  | C   | D  |
|-------------------|---|--------------------|---|----|
| LPV DA            | 1469-1 272 (300-1)                              |                    |   | NA |
| LNAV/VNAV DA      | 1723-1 $\frac{7}{8}$ 526 (600-1 $\frac{7}{8}$ ) |                    |   | NA |
| LNAV MDA          | 1660-1 463 (500-1)                              |                    | 1660-1 $\frac{3}{8}$ 463 (500-1 $\frac{3}{8}$ ) | NA |
| <b>C</b> CIRCLING | 1760-1 563 (600-1)                              | 1780-1 583 (600-1) | 1840-1 $\frac{3}{4}$ 643 (700-1 $\frac{3}{4}$ ) | NA |

NC-3, 13 JUN 2024 to 11 JUL 2024

NC-3, 13 JUN 2024 to 11 JUL 2024